

FALLING *in*



PALOMA  
VE



An architectural rendering of a modern university campus. The scene features a central, multi-story tower with a flat roof and several windows. To the right, a long, low-rise building with large glass windows and balconies is visible. The foreground is dominated by a large, circular landscaped area with a dark asphalt path curving around it. The area is filled with lush green trees and grass. The sky is bright blue with scattered white clouds. The overall aesthetic is clean, modern, and green.

A TOTALLY RENEWED  
**PALOMA GRIDA**  
WILL BE THE HIGHLIGHT OF  
**THE SUMMER OF 2025!**

**HERITAGE & INNOVATION**

A familiar haven, completely renewed



An aerial photograph of a resort beach. The foreground shows the ocean with gentle waves washing onto a sandy shore. Numerous people are seen wading and walking on the beach. The middle ground is dominated by a vast array of blue lounge chairs and light-colored thatched umbrellas arranged in neat rows. In the background, a large resort complex with multiple buildings and a central tower is visible, surrounded by lush greenery and palm trees under a bright blue sky with scattered clouds.

FULLY RENEWED  
YET *COMFORTABLY* FAMILIAR

NATURAL BEAUTY:  
The bluest seas and  
lushest gardens, under the  
generous Mediterranean sun.





A Renewed  
*Oasis* on  
*Familiar Grounds*





COMMITMENT  
TO EXCELLENCE:

Continuously enhancing  
the Paloma experience.

# THE PERFECT PALOMA EXPERIENCE, REIMAGINED



We meticulously preserve

*iconic features* and *the soul of Paloma Grida*



The Tower



The Street



Village set up with Lush Gardens



Various Accommodation Options

12 Room Types with Unique Comfort



Family Friendly Facilities

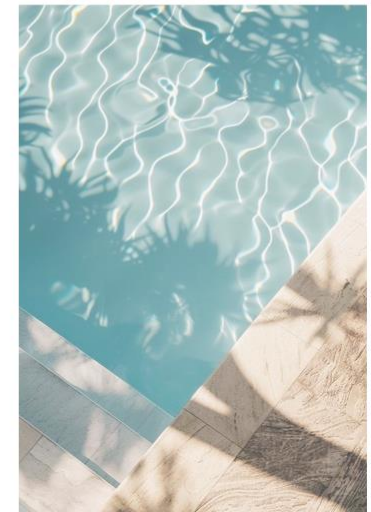


# Beautifully *Renewed*

Paloma Grida is being completely renewed, breathing new life into the resort while staying true to its original charm. This transformation is carefully planned to preserve the essence of Paloma Grida, ensuring that the iconic features and lush natural gardens that have long defined the resort remain central to the guest experience.

The renovation process is being guided by a deep respect for the resort's heritage, with a focus on enhancing its timeless appeal. Iconic architectural elements, such as the Mediterranean-inspired design and open-air terraces, are being lovingly restored and revitalized.

These familiar features, shining with renewed beauty, will continue to evoke the same sense of warmth and welcome, offering a seamless blend of tradition and modernity.





# Yet FULLY RENEWED from *top* to *bottom*



Lagoon



Adult Only  
*Lake Concept*



Aquapark



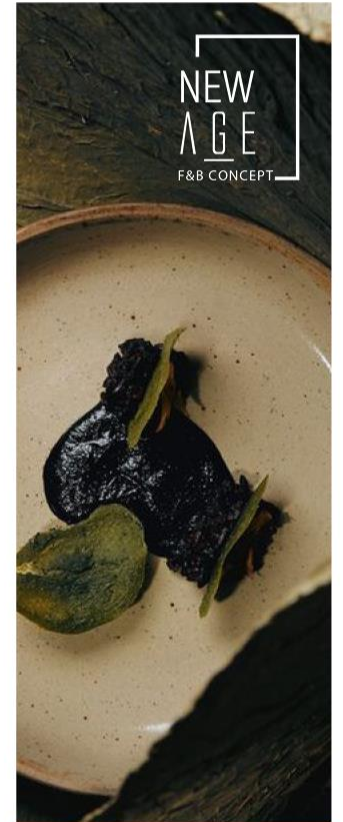
Lit Spaces



Spacious  
Architecture



All Rooms



Extensive  
F&B Offer

NEW  
AGE  
F&B CONCEPT





## ● SLIDES

1. Blackhole
2. Windigo
3. Aquatube
4. Flying Saw
5. Riftslide

## ● KIDS PLAYGROUNDS & ENTERTAINMENT

6. Aquatower for Kids
  - └ 5 Dedicated Kids' Slides
7. Spray Action



Number of Slides	Quantity	User	Instant Capacity	Slides	Height (M)	Length (M)	Theoretic Maximum Capacity (per hour)	Kids	Teenage	Adult	Equipment	Excitement Level
1	1	2	4	Turbolance	16.20	86.60	360	X	X	X	Inner Tube	Exciting
2	1	1x2	4	Windigo	9.72	77.21	2x150	-	X	X	Headfirst Mat	Exciting
3	1	1	2	Aquatube	12.96	98.54	240	7	X	X	-	Medium Level
4	1	1x2	4	Flying Saw	12.96	SAW+101.92	480	X*	X	X	Inner Tube	Fun
5	1	2	4	Rift Slide	12.96	RIFT+92.12	2x180	X*	X	X	Inner Tube	Exciting
<b>TOTAL:</b>			<b>32</b>	<b>3</b>			<b>2700</b>	<b>3</b>	<b>8</b>	<b>8</b>		





WATERPARK







































# OUTSTANDING IMPLIMENTATION

of Paloma Hotels  
NEW AGE  
FOOD & BEVERAGE  
CONCEPT

Experience a fresh & modern  
approach to dining, featuring  
organic products harvested  
straight from our own farm.





# Touch of *Organic Farm* to a New Age Food and Beverage Concept

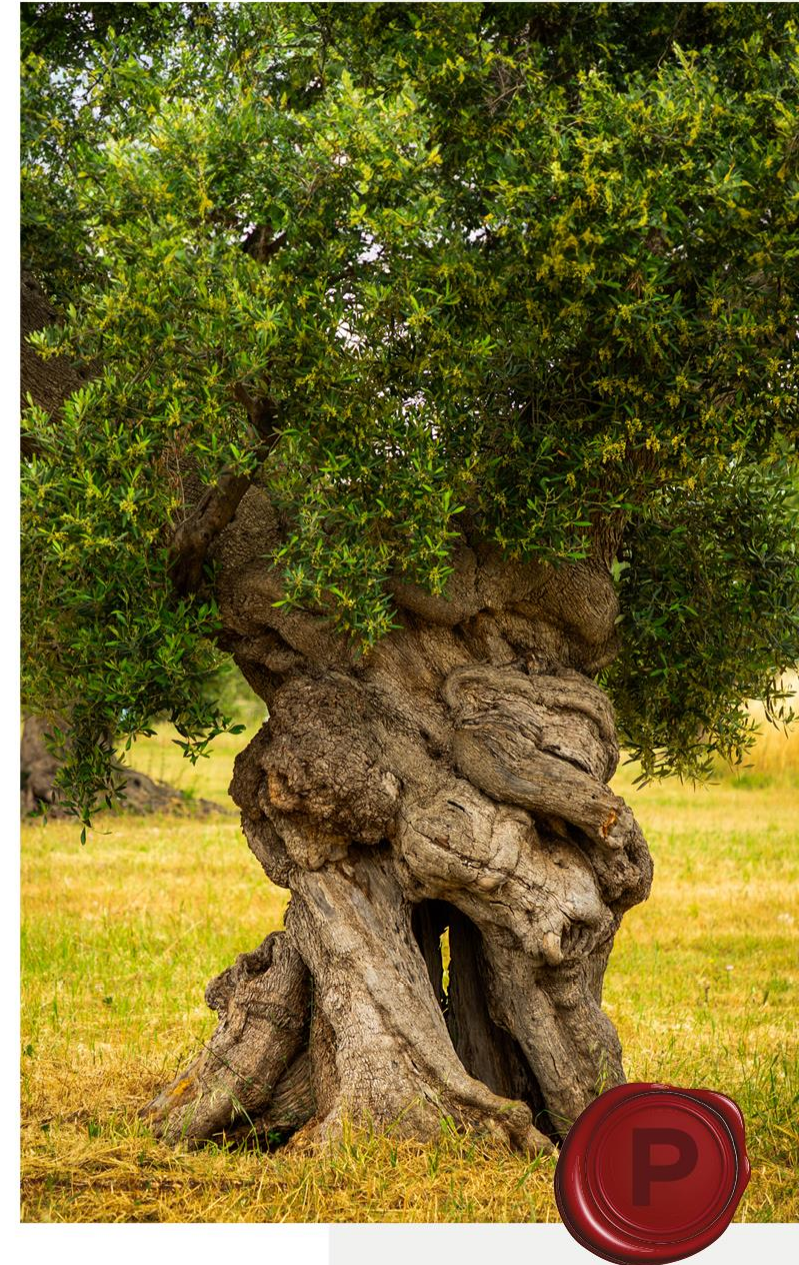
We focus on safe food production with high nutritional value and effective and efficient use of current resources acting with the awareness to be a part of the nature with its love, affection, gratitude towards the soil, offer a taste experience appealing to the palatal delights of our guests with their brand-new food and beverage concept.



## All things beautiful come to life with a seed...

We have adopted a safe, nutritious and resource-efficient food production approach through our love, gratitude and sense of belonging to nature and the Earth. Our priority is to take good care of the environment as well as our guests. We use traditional agriculture and good farming processes to yield organic food products, olive oils and wines. We also add our love and care to the process and serve these organic and healthy products to our guests, promising them an ever-lingering experience of the palate.

We are proud and happy to share with you this success story where we grow our organic seeds.





## *Organic Farm*



Nutrients and ingredients dedicatedly grown in our farm “Yerlim Çiftliği” which is the first and only organic farm in the region, established on an area of 400 hectares and applying traditional and good agricultural practices in every stage of production, are processed skilfully and ingeniously to prepare exclusive menus.

## *Organic Wine*



We grow certified organic grapes in our vineyards and make quality wine with them. At “Yerlim Çiftliği”, we produce organic wine which is an essential part of the dining experience in Paloma Grida.

## *Organic Olive Oil*



Our cuisine is founded upon the principles of local resourcing, seasonable ingredients and traditional delicacies crowned with a modern touch. Our organic natural olive oil is produced from the olives collected from the Group’s own olive gardens, with using traditional agriculture and good farming processes.





## DIVERSE DINING OPTIONS;

Enjoy a selection of four à la carte restaurants, each offering a unique culinary experience

wabi sabi

CURIO

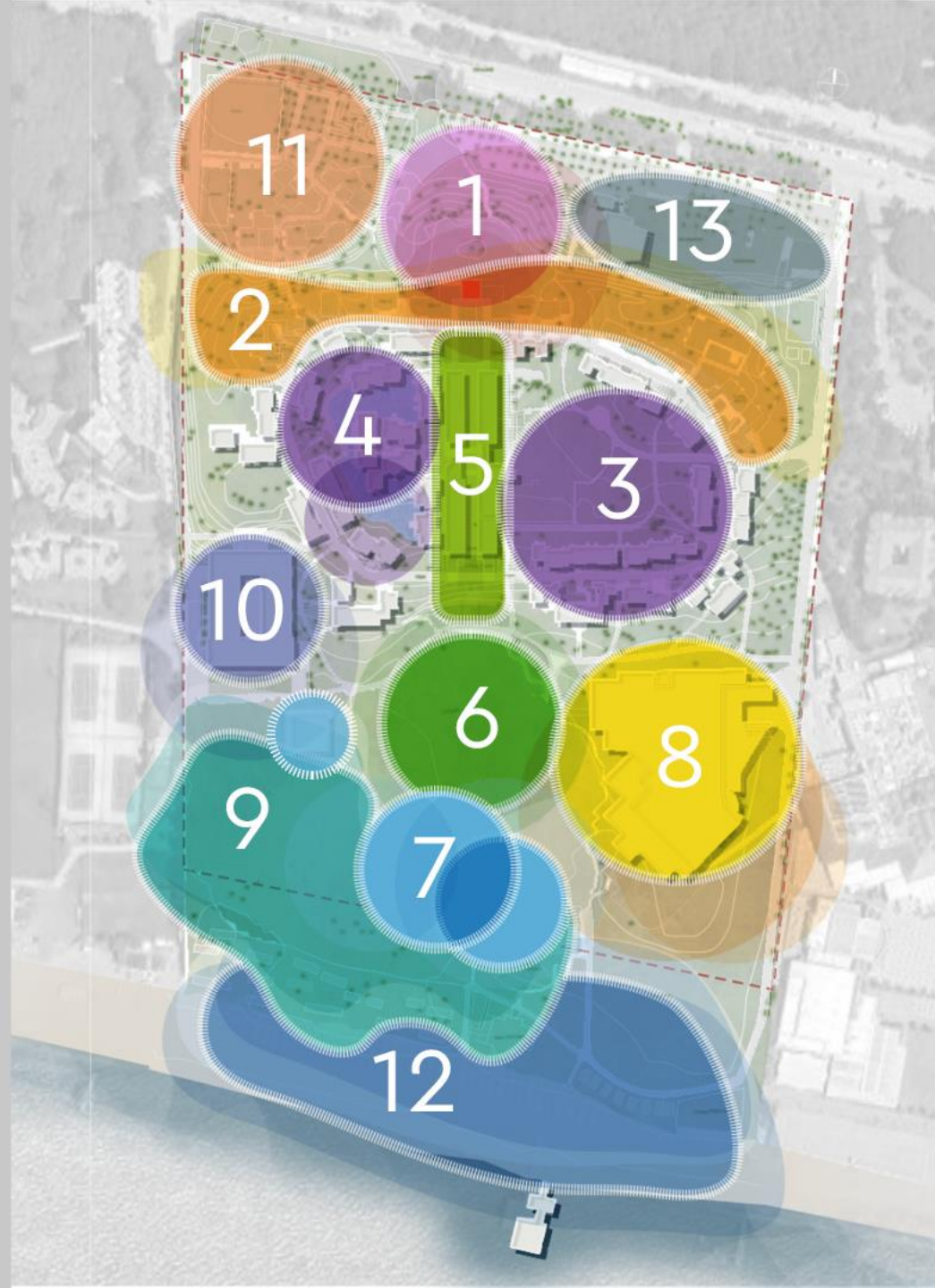
*Quentine*

avare  
Kebab & Meze









\***Slides 27 and 28** provide a comprehensive overview of the **Zone Details**.



# ZONE DETAILS



*1*  
ENTRANCE



*2*  
Main Building  
Reception  
Main Building Rooms  
Spa Centre  
Fitness Centre  
Meeting Rooms



*3*  
*LAGOON*  
Lagoon Club House  
Lagoon Suites  
Lagoon Family Suite  
Lagoon Dublex Suite  
Lagoon Premium Suite



*4*  
*LAKE SUITE*  
Lake Club House  
(Adult-Only)



*5*  
SHOPS  
ZOMM BAR  
GENERAL AREA



*6*  
WABI SABI  
BISTRO  
LOUNGE



# ZONE DETAILS



7

QUENTINE  
CURIO  
AVARE



8

PALOMA  
RESTAURANT  
STAGE



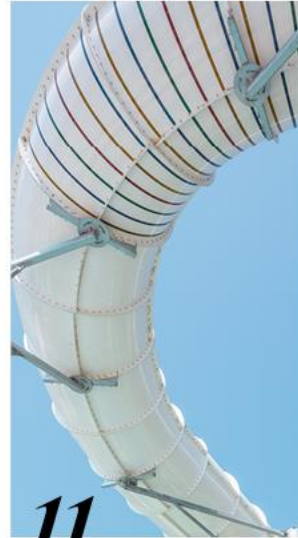
9

POOL  
POOL BAR



10

TEENAGE  
CLUB



11

AQUAPARK  
POLLY KIDS CLUB  
OUTDOOR KIDS  
CLUB



12

BEACH



# ARCHITECTURAL DESIGN



Ingeniously crafted to provide unparalleled comfort for guests, ensuring an enjoyable stay throughout the entire year, regardless of the season.





# MAIN BUILDING

*Architectural Design*

The main building, a testament to architectural elegance, is designed to harmonize with its natural surroundings. Bathed in sunlight, it serves as the heart of the resort, welcoming guests with its open, airy spaces that blur the lines between indoors and out.



# *NATURALLY LIT SPACES*



At Paloma Grida, the main building, fitness center, and spa center are spaces that embrace the warmth and vibrancy of the Mediterranean sun, creating an unparalleled experience of outdoor luxury and wellness.

Here, the Mediterranean sun streams through large windows and open terraces, casting a golden glow that enhances the beauty of the resort's interiors. The use of natural materials and soft, earthy tones creates a seamless transition from the vibrant outdoor landscapes to the serene indoor spaces.



An aesthetically  
pleasing and  
*environmentally  
conscious design*  
that fosters a  
harmonious  
living space.







PALOMA  
HOTELS  
GRIDA





**PALOMA**  
HOTELS  
GRIDA



PALOMA  
HOTELS  
GRADA







PALOMA  
HOTELS  
GRIDA











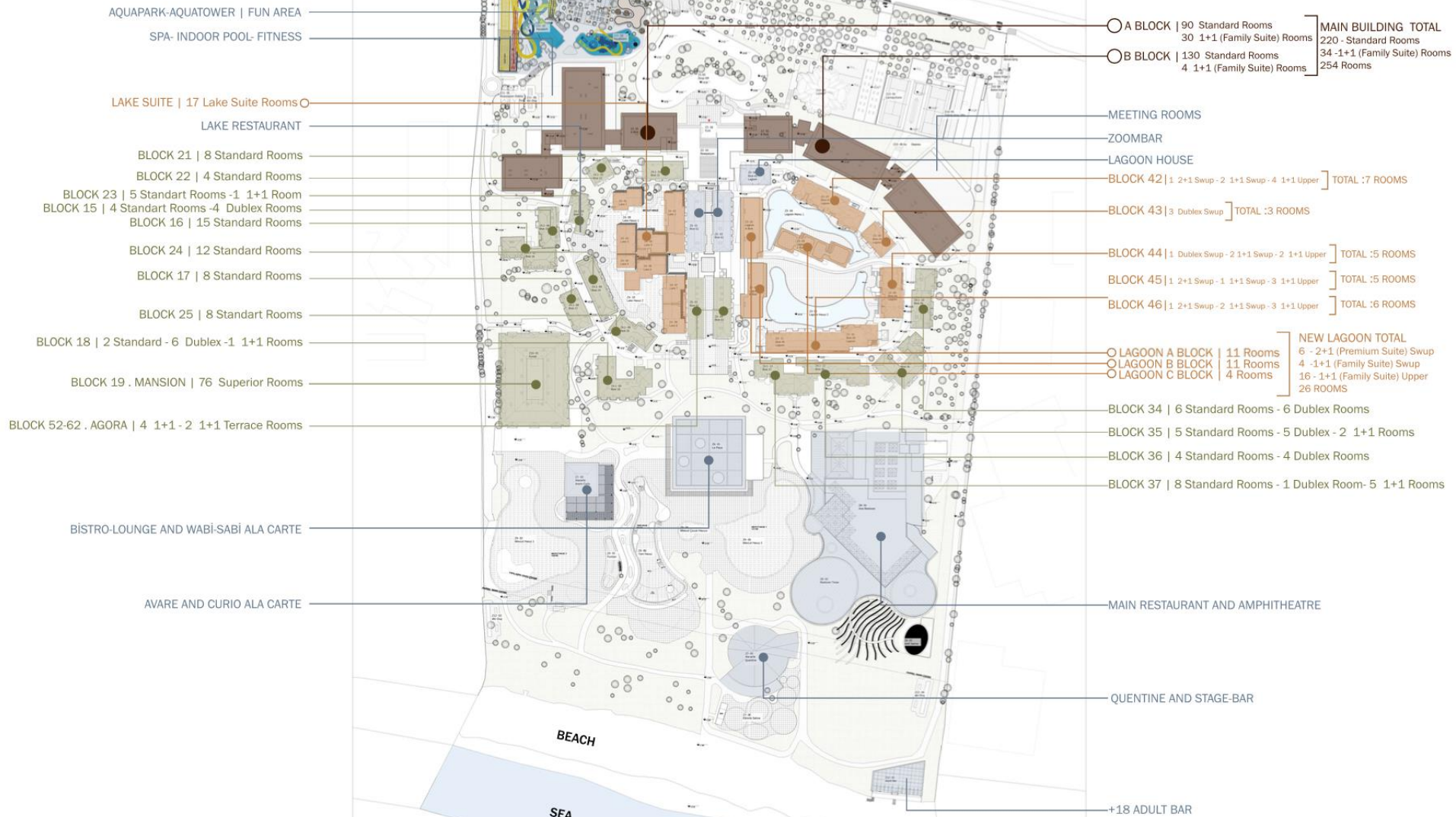




## ROOMS DETAILS

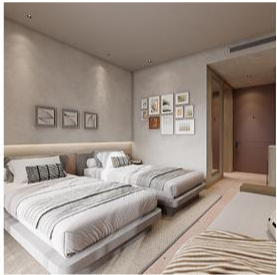
Room Type	Description	m2	Total Number
Standard Room- Main Building	<b>Standard Room</b> Land View with a double or twin bed + 1 daybed + balcony	24	220
Standard Bungalow	<b>Standard Room</b> Garden View with a double + 2 daybeds + balcony	27	89
Superior Standard Land View	<b>Superior Standard Room Land View</b> with 1 double bed + 1 single bed + 1 daybed + balcony	40	52
Superior Standard Sea View	<b>Superior Standard Room Sea View</b> with 1 double bed + 1 single bed + 1 daybed + balcony	40	24
Family Suite Garden	<b>Family Suite Garden View</b> with 1 Bedroom + 1 livingroom 2 daybed + balcony	45	13
Family Suite - Main Building	<b>Family Suite Land View</b> with 1 Bedroom + 1 livingroom 2 daybed + balcony	50	34
Terrace Suite	<b>Terrace Suite Sea View</b> with 1 Bedroom + 1 livingroom 2 daybed+ large terrace	60	2
Dublex Family Suite	<b>Dublex Family Suite Garden View</b> with 1 Bedroom + 1 livingroom 2 daybed + 1 sofa bed +balcony	55	26
Lake Suite Direct Pool Access (+18 Age)	<b>Lake Suite Direct Pool Access</b> with 1 Bedroom + 1 livingroom with 1 daybed + Large terrace pool access (Adults Only)	50	17
Lagoon Suite	<b>Suite</b> Upper floor Lagoon Pool View with 1 Bedroom + 1 livingroom 2 daybed + balcony	50	28
Lagoon Suite Direct Pool Access	<b>Suite</b> Direct Pool Access with 1 Bedroom + 1 livingroom 2 daybeds + Large terrace with pool access	50	11
Lagoon Dublex Suite Direct Pool Access	<b>Dublex Suite Direct Pool Access</b> with 1 Bedroom + 1 livingroom 2 daybeds + 1 sofa bed	60	4
Lagoon Premium Suite Direct Pool Access	<b>Premium Suite Direct Pool Access</b> with 2 bedrooms + 1 living room +1 daybed	80	9
		<b>529</b>	







# ROOMS



## STANDARD ROOMS

Main Building  
220 Rooms

Cap: 2+1 / 3

MAX CAP  
3 Pax  
24 m<sup>2</sup>



## STANDARD ROOMS

Bungalow  
89 Rooms

Cap: 2+1 / 2+2 / 3

MAX CAP  
4 Pax  
27 m<sup>2</sup>



## SUPERIOR STANDARD ROOMS

Land View 52  
Sea View 24

76 Rooms  
Cap: 2+1 / 2+2 / 3 / 3+1

MAX CAP  
4 Pax  
40 m<sup>2</sup>



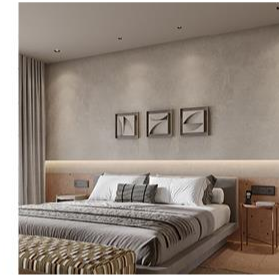
## FAMILY SUITES

Main Building

34 Rooms

Cap : 2+1 / 2+2 / 3 / 3+1 / 4

MAX CAP  
4 Pax  
50 m<sup>2</sup>



## FAMILY SUITES

Garden

13 Rooms

Cap : 2+1 / 2+2 / 3 / 3+1

MAX CAP  
4 Pax  
45 m<sup>2</sup>



## TERRACE SUITES

Sea View

2 Rooms

Cap : 2+1 / 2+2 / 3 / 3+1

MAX CAP  
4 Pax  
60 m<sup>2</sup>



## DUBLEX FAMILY SUITE

Garden View

26 Rooms

Cap : 2+1 / 2+2 / 2+3 / 3 / 3+1 / 3+2 / 4 / 4+1

MAX CAP  
5 Pax  
55 m<sup>2</sup>



# ROOMS



## LAKE SUITE

17 Rooms

Cap: 2 / 3

MAX CAP  
3 Pax  
50 m<sup>2</sup>

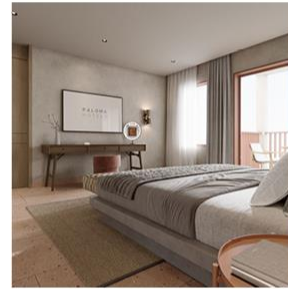


## LAGOON SUITE

28 Rooms

Cap : 2+1 / 2+2 /  
3 / 3+1 / 4

MAX CAP  
4 Pax  
50 m<sup>2</sup>



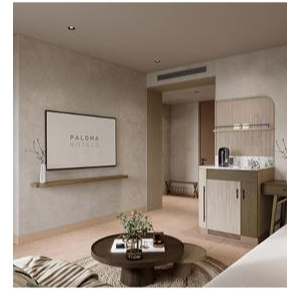
## LAGOON SUITE

-Direct Pool Access

11 Rooms

Cap : 2+1 / 2+2 /  
3 / 3+1 / 4

MAX CAP  
4 Pax  
50 m<sup>2</sup>



## LAGOON DUBLEX SUITE

-Direct Pool Access

4 Rooms

Cap : 2+1 / 2+2 / 2+3 /  
3 / 3+1 / 3+2 / 4 / 4+1

MAX CAP  
5 Pax  
60 m<sup>2</sup>



## LAGOON PREMIUM SUITE

-Direct Pool Access

9 Rooms

Cap : 2+1 / 2+2 / 2+3 /  
3 / 3+1 / 3+2 / 4 / 4+1

MAX CAP  
5 Pax  
80 m<sup>2</sup>

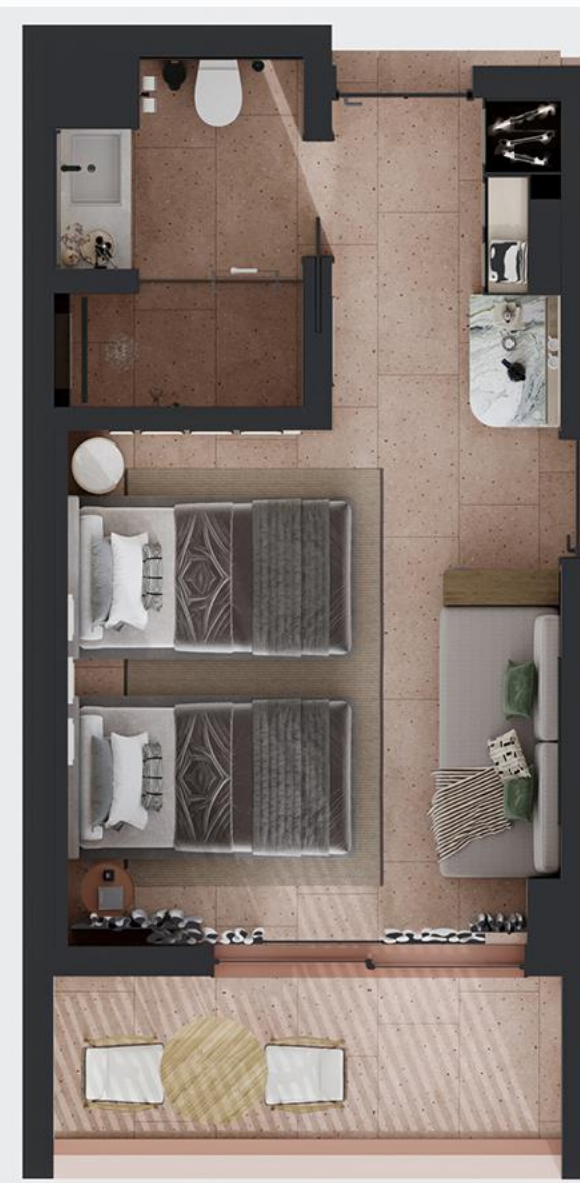
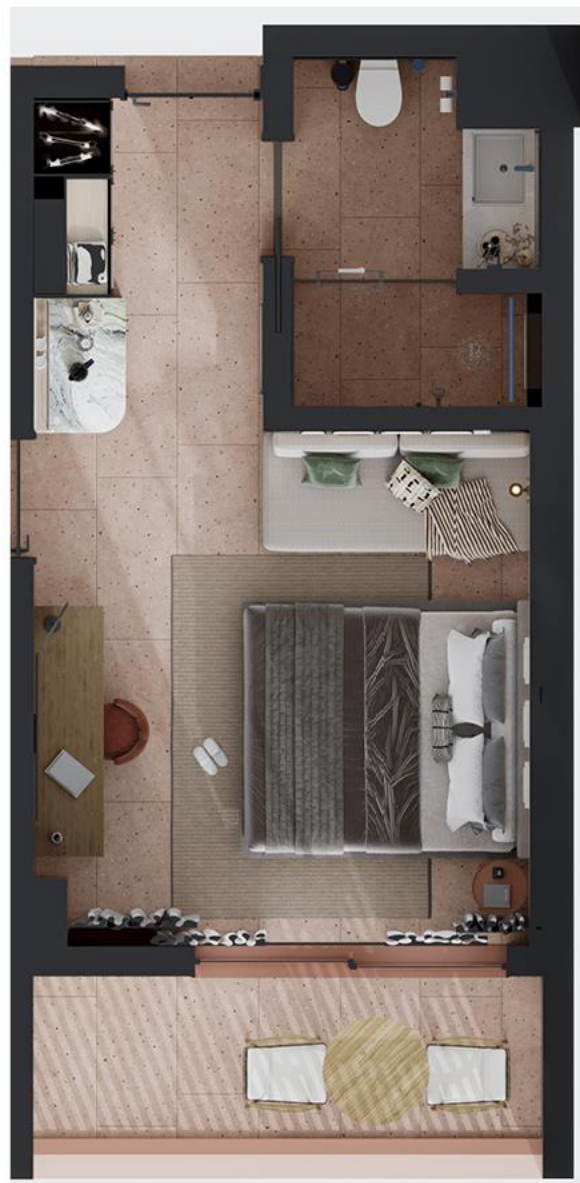


# STANDARD ROOMS

**Main Building**

**Land View** with a double or twin bed + 1 daybed + balcony

220 Rooms - 2+1/3





















# STANDARD ROOMS

**Bungalow**

**Garden View** with a double bed + 2 daybeds + balcony

89 Rooms - 2+1 / 2+2 / 3











PALOMA  
HOTELS







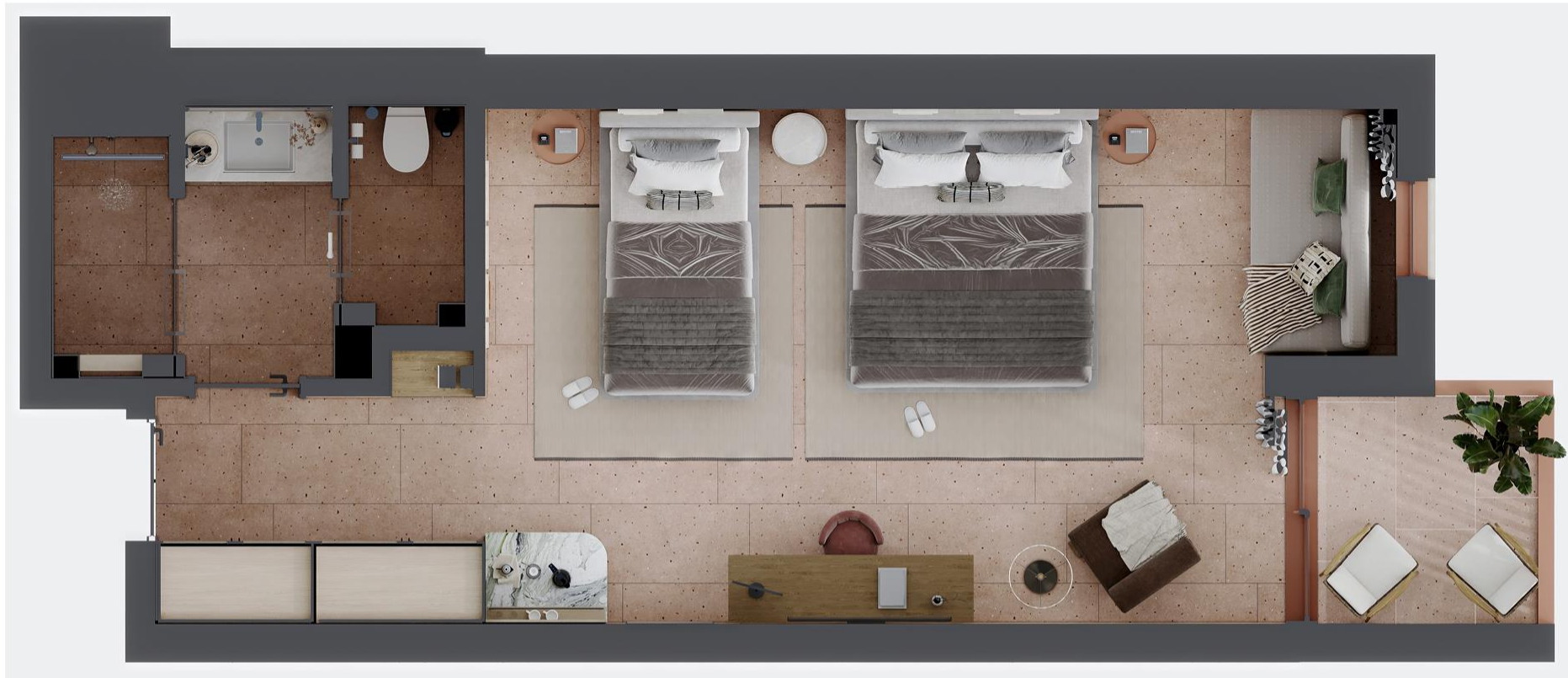
MA  
LS

MAKASAI









# SUPERIOR STANDARD ROOMS

**Land View** with 1 double bed + 1 single bed + 1 daybed + balcony

**52 Rooms** – 2+1 / 2+2 / 3 / 3+1

**Sea View** with 1 double bed + 1 single bed + 1 daybed + balcony

**24 Rooms** – 2+1 / 2+2 / 3 / 3+1





Decorative wall panel with a textured, light-colored finish. It features a horizontal band of warm, ambient lighting. Above the beds, there are two sets of framed art: two square frames on the left and three square frames on the right, each containing abstract, geometric designs in shades of grey and white.

Two beds with grey bedding and white pillows. The beds are positioned on a light-colored floor. Between the beds is a central nightstand. To the left and right of the beds are bedside tables. The headboard area is covered in a light-colored wood panel. The room is decorated with framed art on the wall and a textured rug on the floor.

Two large, textured, light-colored rugs are placed on the floor, one under each bed. A pair of white slippers is visible on the rug under the right bed. The floor is a light, speckled material. The room is decorated with framed art on the wall and a textured rug on the floor.























# FAMILY *SUITES*

Garden

**Garden View** with 1 Bedroom + 1 livingroom + 1 bathroom

2 daybeds + balcony

13 Rooms – 2+1 / 2+2 / 3 / 3+1















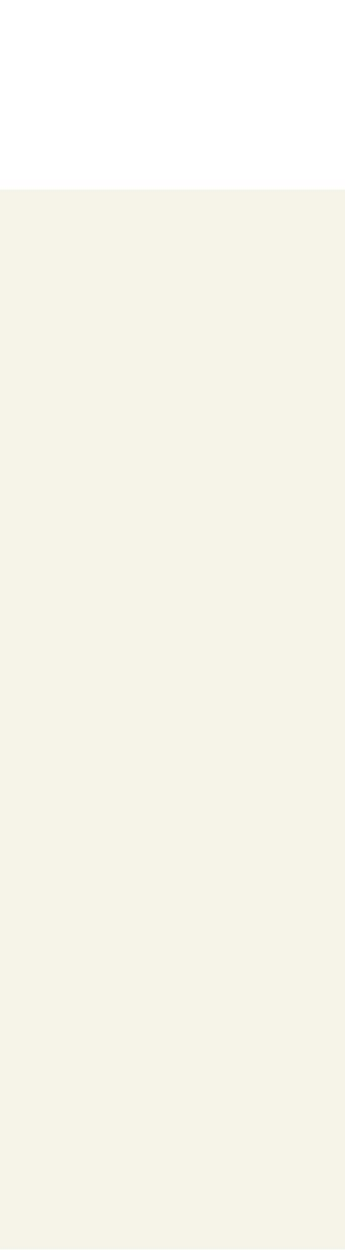
PALOMA  
HOTELS

NEUTRA









PALOMA  
HOTELS







# FAMILY *SUITES*

Main Building

**Land View** with 1 Bedroom + 1 livingroom + 2 bathrooms  
+ 2 daybeds + balcony

34 Rooms – 2+1 / 2+2 / 3 / 3+1 / 4







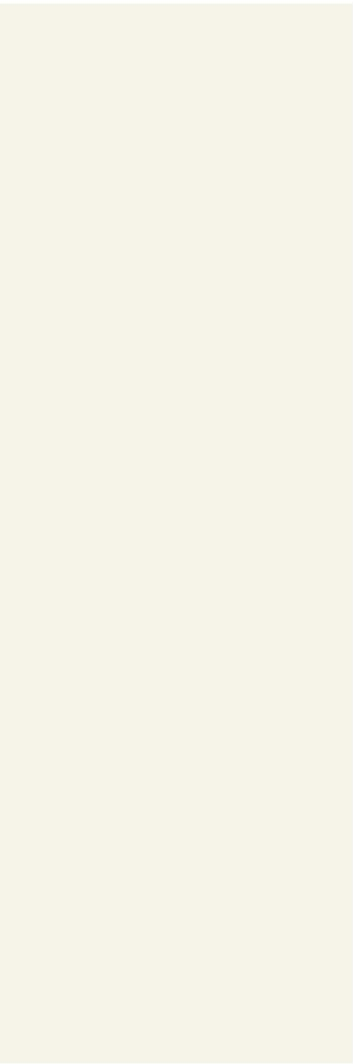




PALOMA  
HOTELS

NEOTPA



















# TERRACE *SUITE*

**Sea View** with 1 Bedroom + 1 livingroom  
+ 2 bathrooms + 2 daybeds + large terrace

2 Rooms – 2+1 / 2+2 / 3 / 3+1











PALOMA  
HOTELS



# DUBLEX FAMILY SUITE

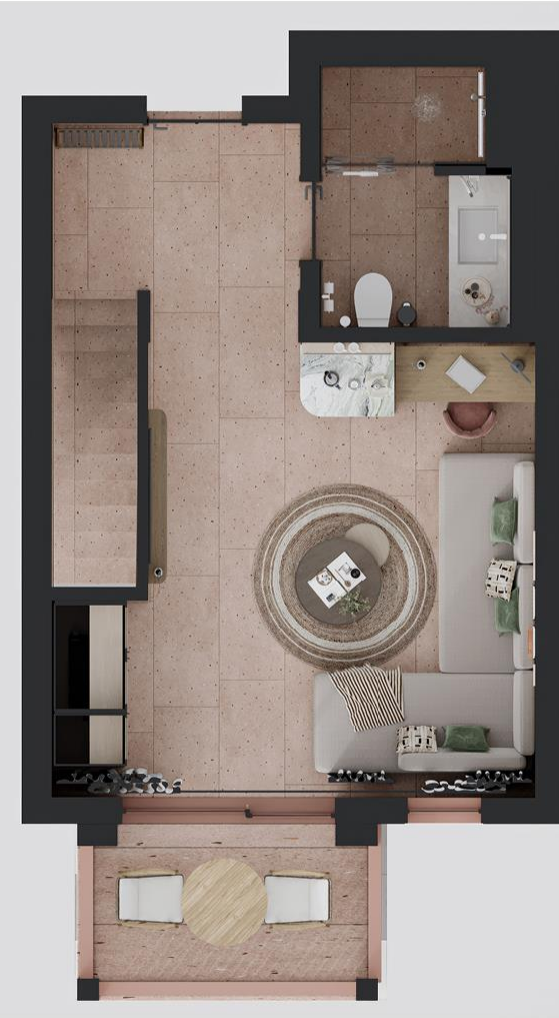
**Garden View** with 1 Bedroom + 1 livingroom  
+ 2 bathrooms + 2 daybeds + 1 sofa bed

26 Rooms – 2+1 / 2+2 / 2+3 / 3 / 3+1 / 3+2 / 4 / 4+1

Lower Floor



Entrance Floor



























# *Lake* Suites

Exclusive suites featuring direct access to a private pool for an enhanced luxury experience.



# Lake Suite

## Adult-Only Concept



Privileges  
Exclusive for  
*Lake Suites*



Direct Pool  
Access



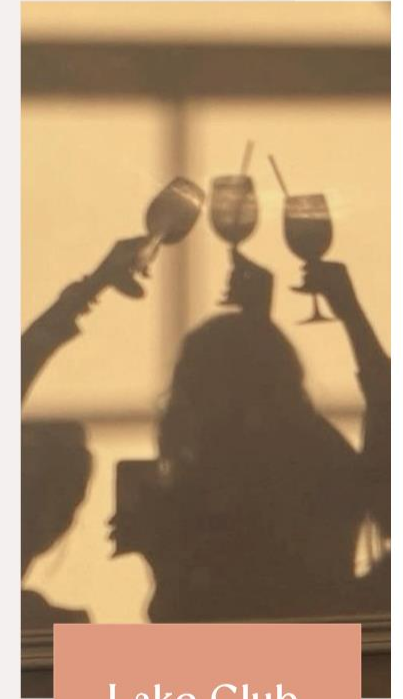
Private Spacious  
Sunbating Spaces



Lake Special  
Room Breakfast



Treat Yourself  
Daily Service



Lake Club



Direct  
*Pool*  
Access





Spacious  
*Sunbathing*  
Spaces











# LAKE SUITES CONCEPT

---

- Private Pool & All Lake suites Direct Pool Access
- Welcome bar setup on arrival (free of charge on the day of entry, additional requests are subject to a charge)
- Fresh fruits, Fresh flowers and organic bottle of Paloma wine on arrival
- Breakfast, Lunch & Dinner in Lake Restaurant with reservation
- Turndown service
- Bathrobes, slippers
- 24 hours room service, free of charge (excluding alcoholic-beverages)
- Massage service to rooms upon request with extra charge
- Priority reservations for A'la Carte Restaurants
- Happy hours with special Grida's cocktails



# LAKE SUITE

*Adult-Only*

**Direct Pool Access** with 1 Bedroom + 1 livingroom  
with 1 daybed + Large terrace pool access

17 Rooms - 2 / 3























PALOMA  
HOTELS













The central kitchen island is a focal point, featuring a curved marble countertop with a white and grey veined pattern. Below the countertop is a dark wood cabinet with a light wood panel on the right side. The upper section of the island is a light wood panel with two shelves. The shelves are illuminated from below, creating a warm glow. On the top shelf, there are two white mugs and two tall, thin vases. On the second shelf, there are two more white mugs and two more tall, thin vases. The island is flanked by built-in wooden shelving units. The shelves are filled with books, a coffee maker, and decorative items. The background shows a hallway with a textured wall, a framed picture, and a staircase.

The left side of the built-in shelving unit features four shelves. The top shelf holds a stack of books, including one titled "LIFE AT THE EDGE". The second shelf holds a stack of books, including one titled "LIFE AT THE EDGE". The third shelf holds a stack of books, including one titled "LIFE AT THE EDGE". The bottom shelf holds a stack of books, including one titled "LIFE AT THE EDGE".

The right side of the built-in shelving unit features four shelves. The top shelf holds a stack of books, including one titled "LIFE AT THE EDGE". The second shelf holds a stack of books, including one titled "LIFE AT THE EDGE". The third shelf holds a stack of books, including one titled "LIFE AT THE EDGE". The bottom shelf holds a stack of books, including one titled "LIFE AT THE EDGE".

The background shows a hallway with a textured wall. A framed picture hangs on the wall. A staircase with light-colored steps leads up. A portion of a light-colored sofa is visible on the right side.



# MEDITERRANEAN *Luxury* AT HEART

## MEDITERRANEAN ESSENCE:

The soul of Grida remains,  
enriched with modern luxury.





# Lagoon

## Family Friendly Concept



Lagoon  
Club House



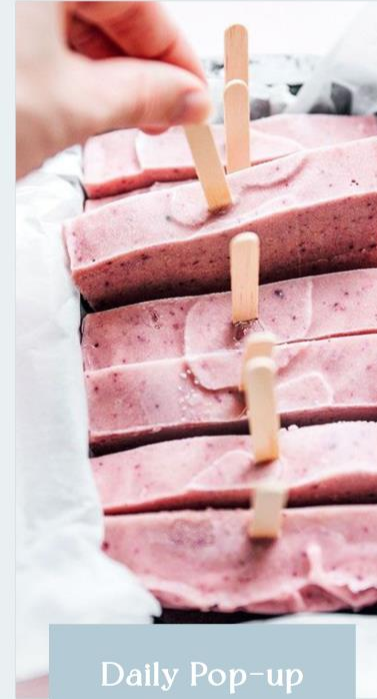
Kids Club  
Corner for  
Lagoon



Unique  
Family Friendly  
Comfort



Lagoon  
Exclusive Pool



Daily Pop-up  
Treats



Concierge  
Service



BRAND  
*Lagoon*  
NEW







CLUB  
HOUS

















































BLOK  
15-16

45

24







**Lagoons Total Rooms**  
 42-46 Blocks and New Lagoon

24 Swup (8\*2+1 room 4\*2+1 room 11\*3+1 room)  
 28 1+1 Upper

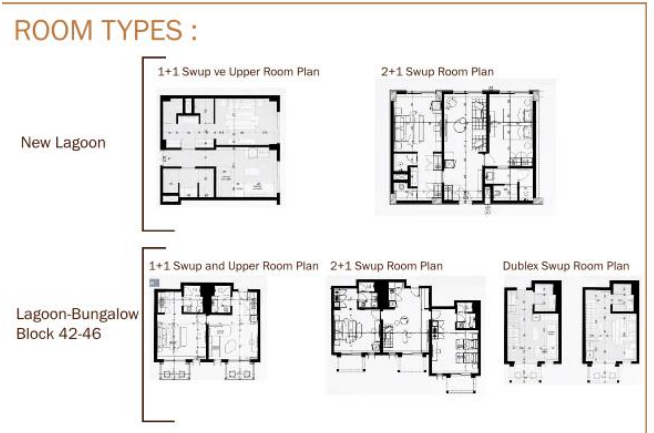
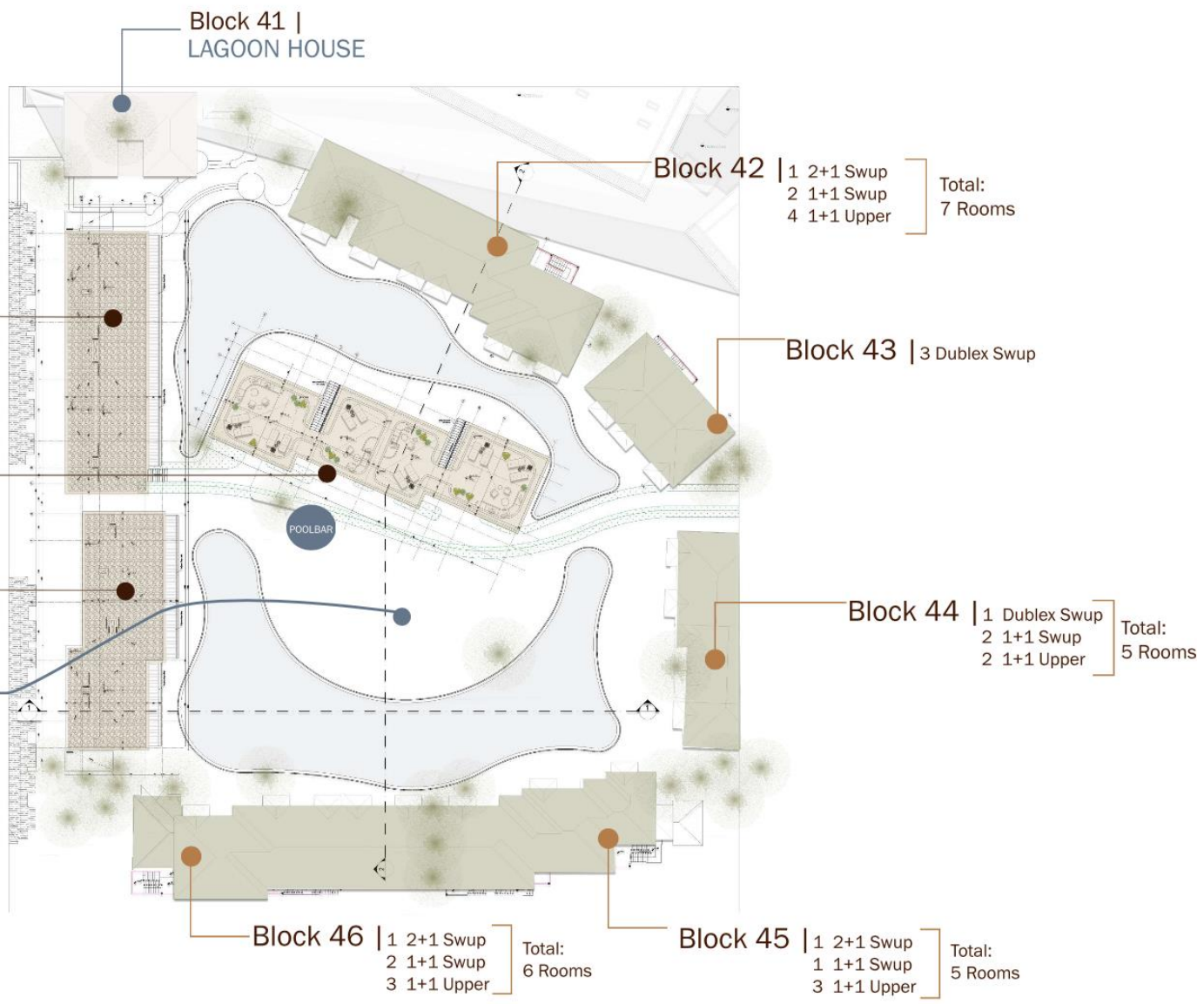
**TOTAL: 52 ROOMS**

**New Lagoon | A-B and C Block**

Total : 26 Rooms

- New Lagoon A BLOCK
  - 2 2+1 Swup
  - 1 1+1 Swup
  - 8 1+1 Upper
- New Lagoon C BLOCK
  - 2 2+1 Swup
  - 2 1+1 Swup
- New Lagoon B BLOCK
  - 2 2+1 Swup
  - 1 1+1 Swup
  - 8 1+1 Upper

**Sunbathing Island**  
 Sunbed, bar and seating areas







# LAGOON CONCEPT

---

- Lagoon Club House
- Concierge Service 08:00 – 24:00
- Club house service (fresh sandwiches, pastries, cookies with coffee & tea) (10:00 – 22:00)
- Lagoon private Pool & Bar
- Local and egzotic fruits, Fresh flowers and organic bottle of Paloma wine on arrival
- Afternoon treat
- Turndown service
- Bathrobes, slippers
- Lagoon Houses private Polly Kids Club
- Priority reservations for A'la Carte Restaurants



# LAGOON ROOMS

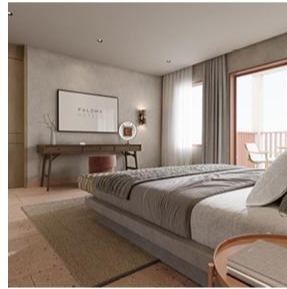


LAGOON SUITE

28 Rooms

Cap : 2+1 / 2+2 /  
3 / 3+1 / 4

MAX CAP  
4 Pax  
50 m<sup>2</sup>



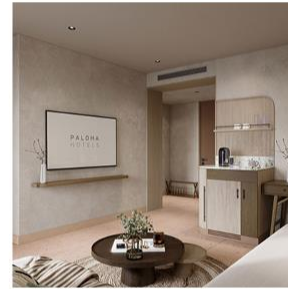
LAGOON SUITE

-Direct Pool Access

11 Rooms

Cap : 2+1 / 2+2 /  
3 / 3+1 / 4

MAX CAP  
4 Pax  
50 m<sup>2</sup>



LAGOON  
DUBLEX SUITE

-Direct Pool Access

4 Rooms

Cap : 2+1 / 2+2 / 2+3 /  
3 / 3+1 / 3+2 / 4 / 4+1

MAX CAP  
5 Pax  
60 m<sup>2</sup>



LAGOON  
PREMIUM SUITE

-Direct Pool Access

9 Rooms

Cap : 2+1 / 2+2 / 2+3 /  
3 / 3+1 / 3+2 / 4 / 4+1

MAX CAP  
5 Pax  
80 m<sup>2</sup>



# LAGOON *SUITE*

**Suite Upper floor Lagoon Pool View**  
with 1 Bedroom + 1 livingroom + 2 bathrooms  
+ 2 daybeds + balcony

28 Rooms - 2+1 / 2+2 / 3 / 3+1 / 4





# LAGOON *SUITE*

**Suite Direct Pool Access** with 1 Bedroom + 1 livingroom  
+ 2 bathrooms + 2 daybeds + Large terrace with  
pool access

11 Rooms - 2+1 / 2+2 / 3 / 3+1 / 4





# LAGOON DUBLEX *SUITE*

## **Dublex Suite Direct Pool Access**

with 1 Bedroom + 1 livingroom + 2 bathrooms  
+ 2 daybeds + 1 sofa bed

4 Rooms - 2+1 / 2+2 / 2+3 / 3 / 3+1 / 3+2 / 4 / 4+1





# LAGOON PREMIUM *SUITE*

**Premium Suite Direct Pool Access**

2 bedrooms + 1 living room +1 daybed

9 Rooms - 2+1 / 2+2 / 2+3 / 3 / 3+1 / 3+2 / 4 / 4+1











PALOMA  
HOTELS

TASCHEN

TASCHEN

PALOMA









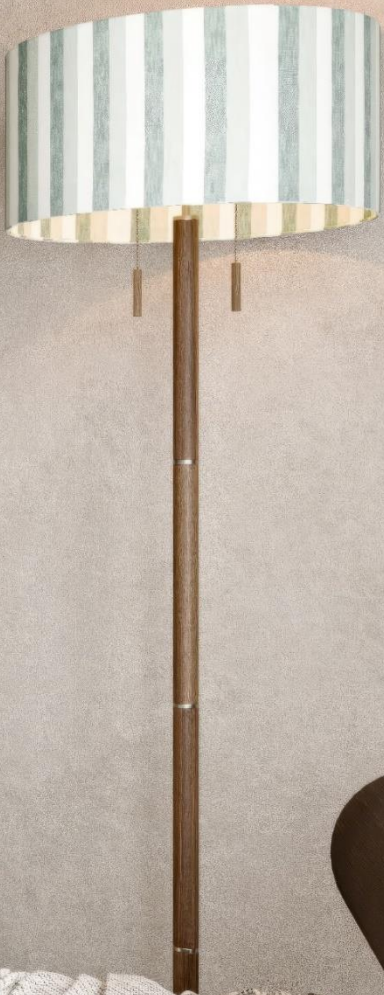








PALOMA  
HOTELS















PAL  
HOTEL

















LUXURY  
ULTRA ALL INCLUSIVE  
— FOOD





PALOMA  
RESTAURANT









PALOMA  
RESTAURANT











# *Quentine*





# *Quentine*





# Quentine







LUXURY  
ULTRA ALL INCLUSIVE  
— BEVERAGE











# EXPANSIVE & BEAUTIFUL GARDENS



Lush and well-maintained gardens create a serene and tranquil environment.





CAFE  
PALETTE  
MODERN INTERIOR

CAFE  
PALETTE  
MODERN INTERIOR





ALBERTO

CAFE









HERMÈS  
PARIS

EMPORIO ARMANI

EMPORIO ARMANI

































# Beach & *Cabana*































*Stage*



































# Polly Kids *Club*



**Polly**  
Kids



# Teenage *Club*







# Meeting *Rooms*



2500  
M2







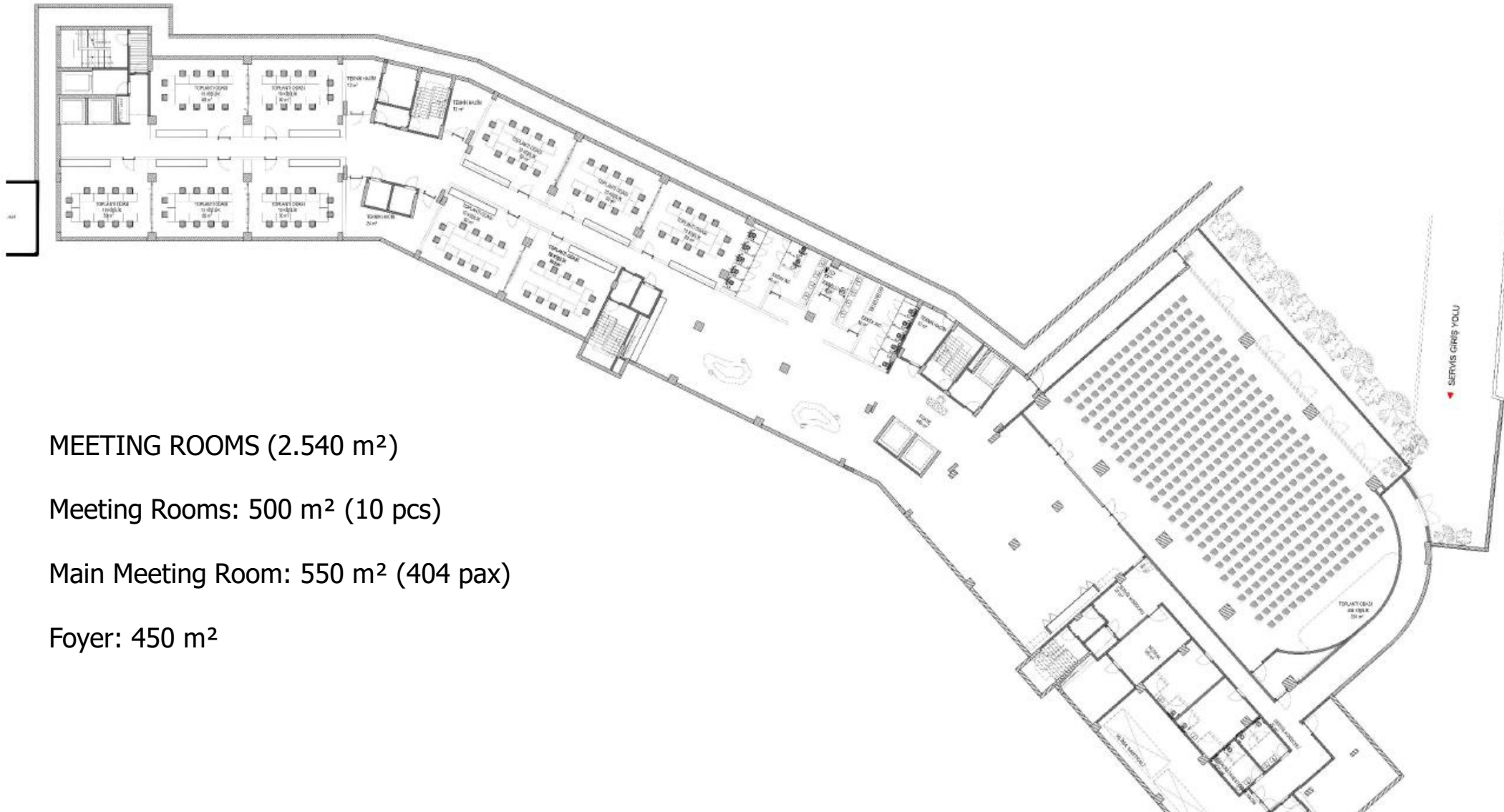


## MEETING ROOMS & FACILITIES & EQUIPMENTS

NAME OF THE MEETING ROOMS	AREA (m <sup>2</sup> )	LENGTH (m)	WIDE (m)	HEIGHT (m)	STAGE (m <sup>2</sup> )	THEATRE SHAPE	CLASSROOM SHAPE	COCKTAIL SHAPE	BANQUET SHAPE
Main Meeting Room	500 m <sup>2</sup>	28	17	5,3	30 m <sup>2</sup>	600	288	315	260
Meeting Room 1	50 m <sup>2</sup>	7,6	6,5	5,3		42	24	42	
Meeting Room 2	50 m <sup>2</sup>	7,6	6,5	5,3		42	24	42	
Meeting Room 3	50 m <sup>2</sup>	7,6	6,5	5,3		42	24	42	
Meeting Room 4	50 m <sup>2</sup>	7,6	6,5	5,3		42	24	42	
Meeting Room 5	50 m <sup>2</sup>	7,6	6,5	5,3		42	24	42	
Meeting Room 6	50 m <sup>2</sup>	7,6	6,5	5,3		42	24	42	
Meeting Room 7	50 m <sup>2</sup>	7,6	6,5	5,3		42	24	42	
Meeting Room 8	50 m <sup>2</sup>	7,6	6,5	5,3		42	24	42	
Meeting Room 9	50 m <sup>2</sup>	7,6	6,5	5,3		42	24	42	
Meeting Room 10	50 m <sup>2</sup>	7,6	6,5	5,3		42	24	42	
NOTE	Meeting rooms are designed to be combined. A total of 10 rooms (2 + 2 + 3 + 3) can be arranged into 2 spaces of 100 m <sup>2</sup> and 2 spaces of 150 m <sup>2</sup> each.								
Merged Version	100 m <sup>2</sup>	15,2	6,5	5,3		98	48	84	



# MAIN BUILDING MEETING ROOMS PLAN



MEETING ROOMS (2.540 m<sup>2</sup>)

Meeting Rooms: 500 m<sup>2</sup> (10 pcs)

Main Meeting Room: 550 m<sup>2</sup> (404 pax)

Foyer: 450 m<sup>2</sup>



# OTHER FACILITIES

---

- Shopping Area
- Hairdresser with charge
- Baby sitter service on request with charge
- Medical Services are chargeable
- Laundry service with charge
- Turkish bath, sauna & Fitness Centre available
- Complimentary WI FI in rooms and public areas
- Outdoor car park free of charge
- Currency Exchange available at reception and etc.





Excited to  
welcome you  
in the summer  
of 2025 at the  
fully renewed  
*Paloma Grida.*