



Beyond Resort Kata
Phuket, Thailand





Beyond Resort Kata
Phuket, Thailand







LOCATION

Beyond Resort Kata is directly set on Kata Bay, Phuket's pride and most sought after beach, noted as one of the gems of the Andaman Sea.



POINT OF INTEREST

| | km. | mi |
|---------------------------------|------|------|
| View Point | 3.1 | 1.92 |
| Karon Beach | 4.2 | 2.6 |
| Chalong Teample | 8.6 | 5.3 |
| Patong Beach | 10 | 6.2 |
| Phromthep Cape | 10.4 | 6.4 |
| Central Phuket Department Store | 15.4 | 9.5 |
| Phuket International Airport | 45.6 | 28 |

Phuket International Airport
 45.6 km. 25 mi.
 60 Mins
 Car/Van

HOTEL DETAIL

| | |
|-------------------------|--------------|
| Hotel Type | Resort |
| Number of room(s) | 275 |
| Standard Check-in | 14:00 p.m |
| Standard Check-out | 12:00 p.m. |
| Family Fun | No |
| MICE | Yes |
| Distance from the beach | On the beach |



HOTEL DESCRIPTION

On the golden sands of Kata Beach, discover a resort created with complete relaxation in mind. Beyond Resort Kata offers a unique absolute beachfront location, with sunset views to be enjoyed in settings of laid back ambience and contemporary designs. Open-air concepts with a touch of sea breeze complements a truly tropical lifestyle.

Our beach resort maintains total commitment to environmental conservation and the saving of energy. Additionally, we are proud to be a sponsor of scholarships to children studying at the local community schools in the Kata Beach area.

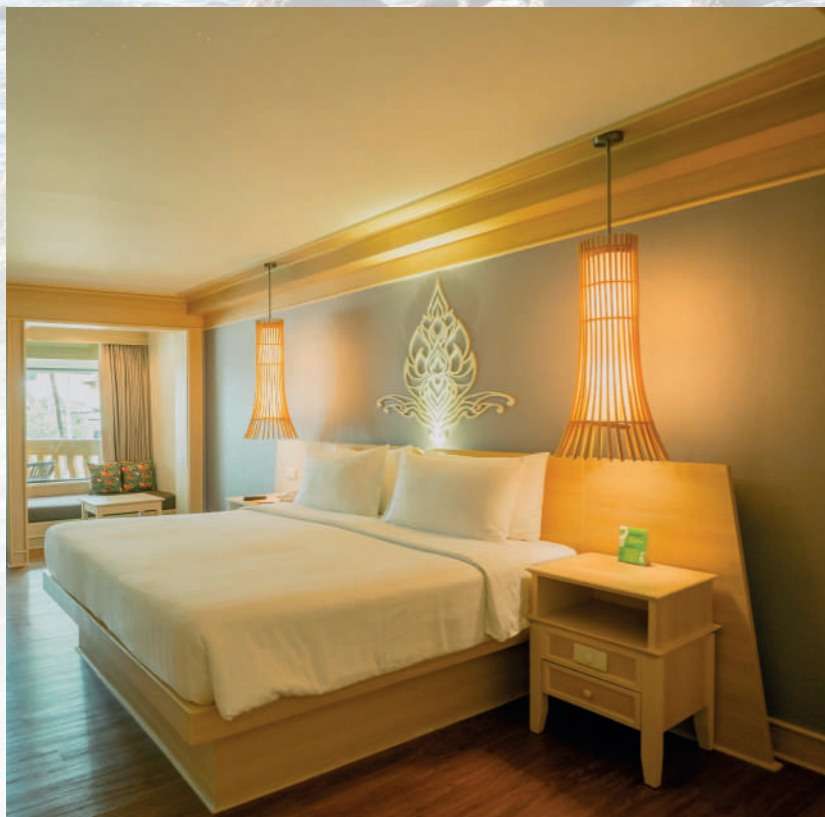
SERVICES / FACILITIES

- Kanda Spa
- Kanda Poolside Massage
- Free-form Swimming Pool with Swim up Bar
- Free Wifi Internet
- Fitness and Sauna
- Restaurants
- Currency Exchange
- Board Room
- Tour Counter
- Wedding Studio
- Jeweller Shop
- Airport Transfer
- Parking Area
- Laundry
- Dry Cleaning Service
- Kids Room



ACCOMMODATION

Offering 275 rooms designed in contemporary style and suites with deluxe resort amenities, offering stunning views over the sands of Kata Beach to the sparkling Andaman Sea and beyond. Perfect for Families or Couples wanting a comfortable and relaxing stay.



ROOM TYPES

| Room Types | units | m ² | ft ² |
|--------------------|-------|----------------|-----------------|
| Superior | 81 | 28 | 301 |
| Deluxe | 76 | 28 | 301 |
| Deluxe Premier | 74 | 28 | 301 |
| Deluxe Pool | 20 | 40 | 430 |
| Pool Access | 20 | 28 | 301 |
| Junior Suite | 3 | 56 | 602 |
| Junior Pool Access | 1 | 56 | 602 |



ROOM DESCRIPTIONS

Superior

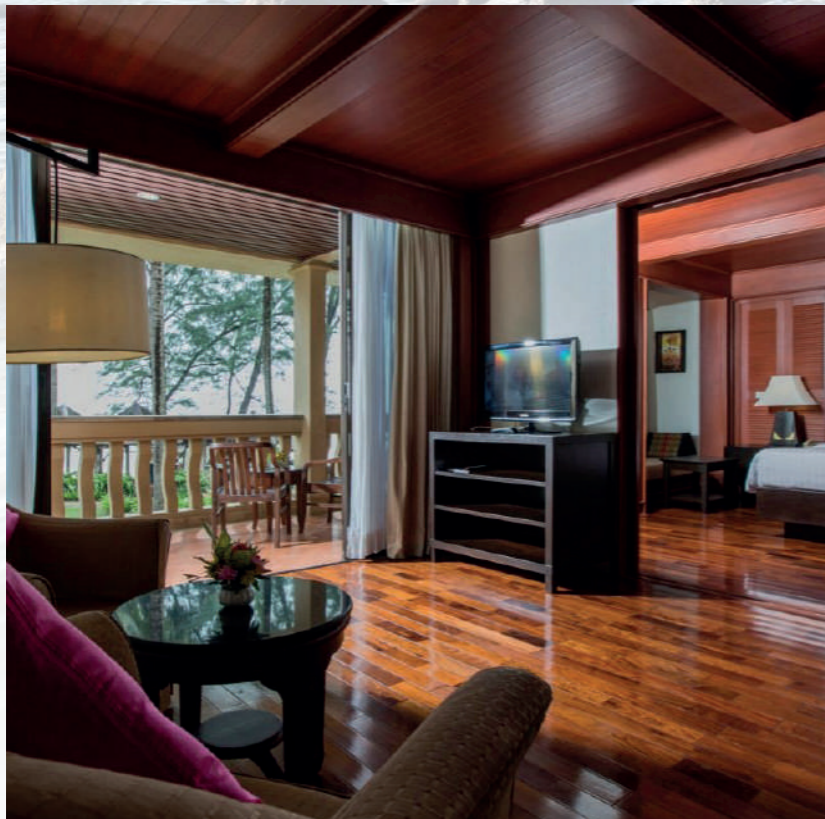
Comfortable and stylish guest rooms that foster relaxation in a tropical paradise setting, featuring self-controlled air-conditioning, mini-bar and a comfortable sofa.

Deluxe

Features are the same as the superior guest room with the Thai traditional style, but Deluxe guest room also feature a private balcony for the spectacular garden view where you relax in the shade.

Deluxe Premier

The best sea views of the Andaman Sea and extra special amenities and facilities are added in this highly recommended set of guest rooms. Premier rooms commands breathtaking panorama view of the Andaman Sea and little extra including in-room coffee machine, extra pillows and high quality duvets, cotton bathrobes, and free Wi-Fi 24 hrs. Comfortable, exclusive and premium, these rooms are ideal for leisure and relaxation.





ROOM DESCRIPTIONS

Deluxe Pool

Available with King-sized bed configuration, this category is ideal for families who need extra space for cots or children's toys and beach gear.

Pool Access

Perfectly suited for families with older children, these rooms are available with King-sized bed configurations and feature a private balcony. Only children over 12 years old are allowed for safety reasons.

Junior Suite

These consist of two rooms: one contains a double bed and separate bathroom; a sliding partition reveals the other—a separate living area, dining table with kitchenette and private balcony.

Junior Pool Access

Consisting of a master bedroom with en-suite, promise easy access to the pool for family fun. A sliding partition opens out to a separate living area for a spacious stay.

A relaxing vacation lifestyle with lounge, dining area and kitchenette, plus private balcony.





FOOD & BEVERAGE

Calcio Beach Spicy Pizza

Relaxed seaside restaurant and chill beach bar that offers fusion style dishes, handmade wood-fired pizzas by Italian Pizzaiolo, Open daily: 11:00 a.m. - 21:00 p.m.

Capacity: 80 seats

Cuisine: International / Thai



FOOD & BEVERAGE

The Atrium Coffee Shop & Terrace

In an open-air setting, enjoy buffet breakfast with a wide choice of Western, Oriental and seafood dishes. Evening buffets are arranged regularly complemented by the tropical breeze and sunsets to die for.

Open daily : 06:30 a.m. - 21:00 p.m.

Cuisine: Thai / International / Seafood

Capacity : 250 seats



The Poolside Bar

A 'swim up' bar offers the perfect perch for a cool cocktail or two at Happy Hour, or any hour you choose. Or sit down at a table and select from a delicious array of Thai and international snacks. If you haven't seen sunset at Kata Beach, you haven't really seen Phuket. Not to be missed!

Open daily: 09:00 a.m. - 21:00 p.m.

Capacity: 60 seats

Cuisine: International / Thai snacks



HEALTH & ACTIVITIES

Kanda Spa

Pampering by highly trained therapists awaits at Kanda Spa, featuring three treatment rooms and foot massage areas, with an extensive menu of treatments available including everything from alleviating stress and back pains to others focusing on pure bliss and relaxation. Also features special couple suite with two treatment beds, sauna and Jacuzzi.

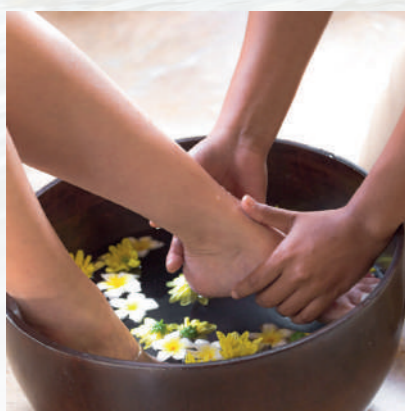
Open daily from 10.00 a.m. - 19.00 p.m.



Kanda Poolside Massage

A relaxing massage from one of our skilled Kanda Spa practitioners, performed under a thatched gazebo beside the pool at Beyond Resort Kata. That will put you back on top of the world!

Open daily from 10:00 a.m. - 17:00 p.m.



Fitness Centre

A fully equipped gym is available to guests on a complimentary basis, featuring all the latest machines designed to keep trim while relaxing on holiday.

Open daily from 07.00 a.m.-19.00 p.m.



HEALTH & ACTIVITIES

Family and Kids Activities










Families are very much in favour at Beyond Resort Kata. Our daily Kids Activities, children can use the 'Kid's Play Area' with play things and games available for children ages 2 to 12 years. Open daily from 09:00 a.m. - 17:00 p.m. Schedule : Upon request



Thai Cooking Class

Enjoy a time learning and dining with our Chefs through our Thai Cooking Classes. Please inform the Front Desk for more details.



|  |  |  |  |  |  |  |  |  |
|---|---|---|---|---|---|---|---|---|
| Name | Dimension | Area (m ²) | Area (ft ²) | Theatre (pax) | Classroom (pax) | U-shape (pax) | Dining (pax) | Cocktail (pax) |
| Kata | 5 x 8 | 56 | 600 | 45 | 20 | 15 | 24 | 20 |
| Karon | 5 x 7 | 50 | 600 | 30 | 15 | 15 | 18 | 20 |
| Kata & Karon | 5 x 15 | 110 | 1200 | 80 | 30 | 25 | 40 | 50 |
| Kanda A | 9 x 15 | 144 | 1230 | 120 | 70 | 30 | 120 | 120 |
| Kanda B | 9 x 15 | 144 | 1230 | 120 | 70 | 30 | 120 | 120 |
| Kanda C | 9 x 15 | 144 | 1230 | 120 | 70 | 30 | 120 | 120 |
| Kanda Hall | 27 x 15 | 432 | 4650 | 400 | 250 | 150 | 270 | 350 |
| Thai 2 Thai | 15 x 15 | 432 | 4650 | - | - | 30 | 80 | 100 |

MEETINGS & EVENTS

We offer you the finest venues, facilities and services for all your special events. From executive conferences or receptions of up to 500 guests to exclusive board meetings, seminar sessions or creative incentive programmes, Beyond Resort Kata will assist with excellent facilities, state of the art technology, and expert support.

Kanda Hall has a maximum capacity of 350 guests and the room is divisible into three equal sections. Four other function rooms of varying sizes make this a highly versatile venue.



BEACH WEDDING

Thai and Western wedding packages offering great value complimented by our absolute beachfront location and luxurious touches to make your Big Day unforgettable for all the right reasons. Your every wish will be catered for, and we will organize everything to the highest standards to ensure that the day you say "I do" is the best day of your lives. Wedding perfection awaits you and your loved one at Beyond Resort Kata.

For more details please contact:

(+66) 7636 0316

E-mail : incentive@katagroup.com



Beyond Resort Kata

Tel (+66) 7636 0300
Fax (+66) 7636 0399
E-Mail info-brkt@katagroup.com
Address 1 Pakbang Rd, Kata Beach
 Tambon Karon, Muang Phuket 83100

beyondresortkata.com beyondresortkata beyondresortkata

Pamookkoo Resort

Tel (+66) 7664 3300
Fax (+66) 7664 3333
E-Mail rsvn-pmkr@katagroup.com
Address 70/1 Kata Rd, Tambon Karon
 Muang Phuket, 83100

pamookkoo.com pamookkoothailand pamookkooresort

Beyond Patong

Tel (+66) 7656 2300
Fax (+66) 7656 2333
E-Mail rsvn-bhpt@katagroup.com
Address 8 Sawatdirak Rd, Tambol Patong
 Kathu Phuket 83150

beyondpatong.com beyondpatong beyondpatong

Beyond Resort Karon

Tel (+66) 7633 0006
Fax (+66) 7633 0529
E-Mail rsvn-brkr@katagroup.com
Address 51 Karon Rd, Karon Beach
 Tambon Karon, Muang Phuket 83100

beyondresortkaron.com beyondresortkaron beyondresortkaron

Phuket Orchid Resort & Spa

Tel (+66) 7635 8300
Fax (+66) 7635 8399
E-Mail rsvn-pors@katagroup.com
Address 34, Luangphochuan Rd, Karon Beach,
 Tambon Karon, Muang Phuket 83100

phuketorchid.com phuketorchidresort phuketorchidresortandspa

Beyond Resort Khaolak

Tel (+66) 7659 2300
Fax (+66) 7659 2399
E-Mail rsvn-brkl@katagroup.com
Address 9/69 Moo 1, Pak Weep Beach, Khuk Khak,
 Takua Pa, Phang Nga 82220

beyondresortkhaolak.com beyondresorts beyondresortkhaolak

Beyond Resort Krabi

Tel (+66) 7562 8300
Fax (+66) 7560 0081
E-Mail rsvn-brkb@katagroup.com
Address 998 Moo 3, Klong Muang Beach
 Tambon Klong, Muang, Nongtalay
 Krabi 81180

beyondresortkrabi.com beyondresortkrabi beyondresortkrabi



THE KATA GROUP COLLECTION

www.katagroup.com



Kata Group Media Center

PHUKET OFFICE

Tel (+66) 7635 8300
Fax (+66) 7635 8399
E-Mail info-brkt@katagroup.com

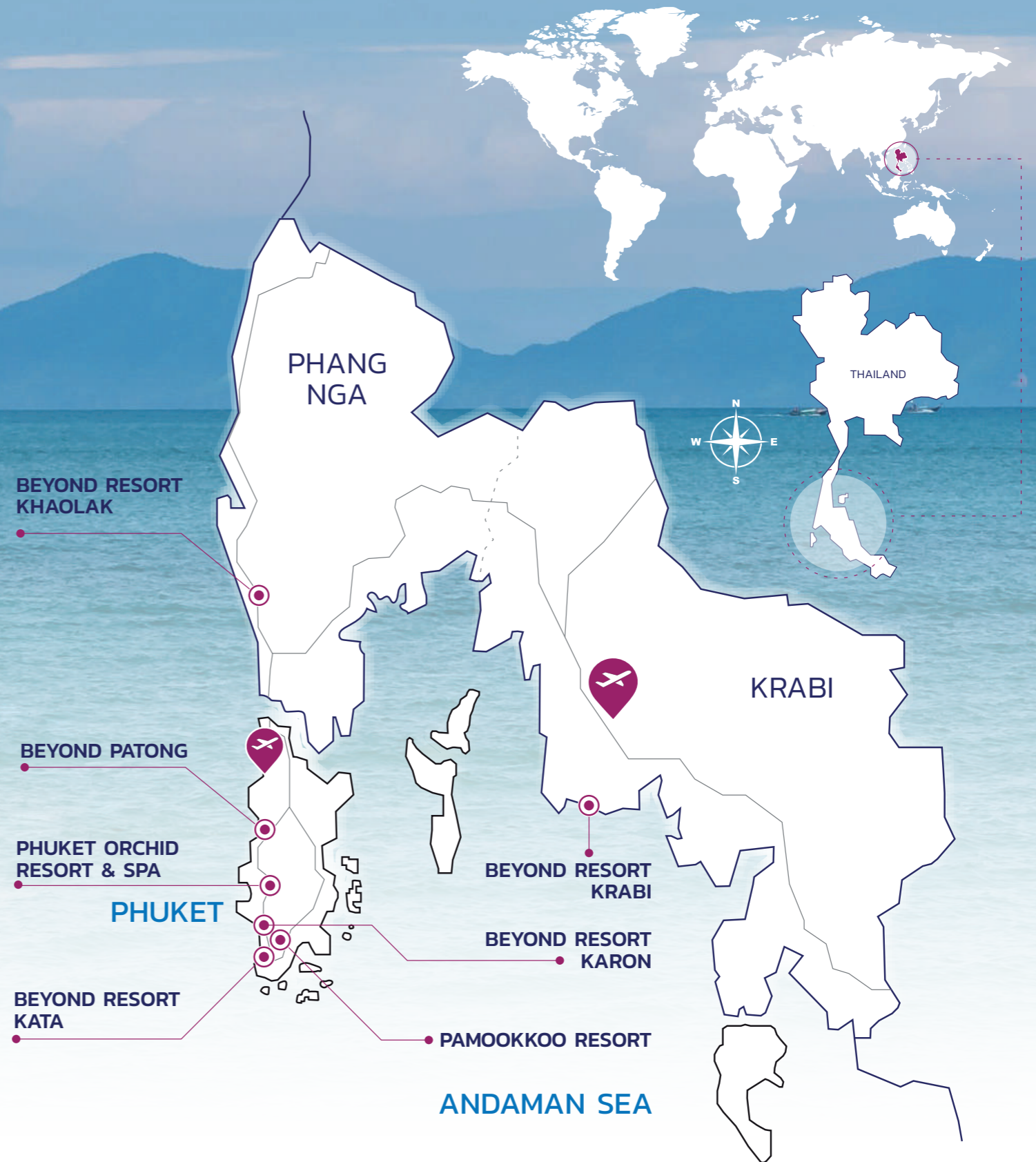
BANGKOK OFFICE

Tel (+66) 2616 3140-4
Fax (+66) 2616 3145
E-Mail marketing@katagroup.com



KATA GROUP RESORT THAILAND

Kata Group has stood out in the Thai hospitality industry for over 40 years. We are one of the longest serving hoteliers. The portfolio includes 8 hotels; 5 hotels in Phuket, Beyond Resort Kata, Beyond Resort Karon, Beyond Patong, Phuket Orchid Resort and Spa and Pamookkoo Resort, as well as Beyond Resort Khaolak in Phangnga, Beyond Resort Krabi in Krabi, and Kandabuuri on Koh Samui.



THE KATA GROUP COLLECTION



THE KATA GROUP COLLECTION