



KATATHANI
PHUKET BEACH RESORT

ACCOMMODATIONS

Choose from the Phuket beach-front suites in our luxury **Thani Wing** or the tropical setting across the lane at our superior **Bhuri Wing** at our Kata Noi Beach resort.

| Room | Number of Rooms | Size |
|-------------------------------|-----------------|-----------|
| BHURI WING | | |
| Deluxe Room | 65 | 40 sqm |
| Deluxe Pool View | 84 | 40 sqm |
| Grand Deluxe | 69 | 50 sqm |
| Pool Access New! | 34 | 50 sqm |
| THANI WING | | |
| Junior Suite | 174 | 45-50 sqm |
| Junior Suite Oceanfront | 44 | 50 sqm |
| Grand Suite | 44 | 75 sqm |
| Family Suite | 1 | 110 sqm |
| One-Bedroom Royal Thani Suite | 1 | 100 sqm |
| Two-Bedroom Royal Thani Suite | 2 | 100 sqm |
| Total | 518 | |

THANI WING

Comprises 266 ocean-front units, all with stunning views of our sumptuous gardens, pools and the blue Andaman Sea. Our rooms have been remodeled. Each features refined living space, extended by a private balcony, ideal for reading, relaxing and watching the sunset together.

Junior Suite

Exquisite and carefully appointed suites feature full or partial views of the Andaman Sea from the balcony or lounge area. Louvered panels can be opened for ocean gazing from the privacy of your own bath. A touch of Thai design adds to the exotic sense of tropical living

Junior Suite Oceanfront

Enjoy living with a magnificent beachfront view from our accommodation, nearest to the beach of all our suites! A tropical contemporary design with bright colors accentuates your home away from home

Grand Suite

Grand Suites combine the natural grace of contemporary Thai architecture with the comforts of modern amenities to create a truly luxurious atmosphere that will meet your every need. The result is an elegant, spacious suite that will unite you with nature through the stunning ocean views from the private balcony.

Family Suite

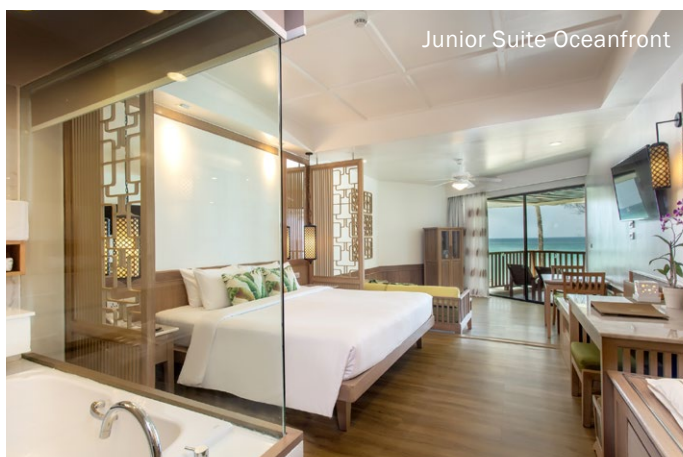
This is the perfect suite to accommodate a family! Family Suite is well-appointed in a tropical Thai design with a touch of cheerfulness for kids. It offers two bedrooms for adults, one kid's bedroom and two bathrooms for four adults and two children. A spacious living/dining room is the perfect area for enjoying private meals and activities at our hotel.



Junior Suite



Junior Suite



Junior Suite Oceanfront



Grand Suite



KATATHANI
PHUKET BEACH RESORT

One-Bedroom Royal Thani Suite

This suite offers you the closest view of the ocean in Phuket! Our grandest suite features spectacular blue sea views, romantic sleeping quarters including a king-sized bed, wonderful living/dining room, an extra-large dressing room, and a double-sized bath with separate shower. Floor-to-ceiling windows surround you with unforgettable sea views from the top floor. Gaze at the sunset while relaxing in the oversized Jacuzzi. Blend a cool drink at the wet-bar for enjoying on your grand private sundeck.

Two-Bedroom Royal Thani Suite

Our wonderful suite offers a stunning sea view from almost every corner. The master bedroom features a spectacular view of the blue ocean and the second bedroom features a partial sea view. Enjoy double vanity, a double-sized bath with separate shower in the master bedroom or relax in the well-appointed living room. Savor the sunset at the extra-large balcony which brings you closest to the ocean.

BHURI WING

In perfect harmony with its natural setting, Bhuri Wing is a quiet oasis of gardens and birdsong, set against jade forest hills.

Deluxe Room

A tasteful twist of Thai traditional style. The unique triangulated layout enhances the sense of a warm family gathering space. This spacious room at our resort in Kata Noi Beach, Phuket, features a generous balcony overlooking the garden where you relax in the shade.

Deluxe Pool View

Artistic design fused with a flare of oriental elegance among exquisite colors and lines. Relax on the fluffy sofa or the outdoor daybed of our Phuket hotel rooms while enjoying the view of the green garden or a sparkling blue pool from the balcony of our romantic Phuket hotel.

Grand Deluxe

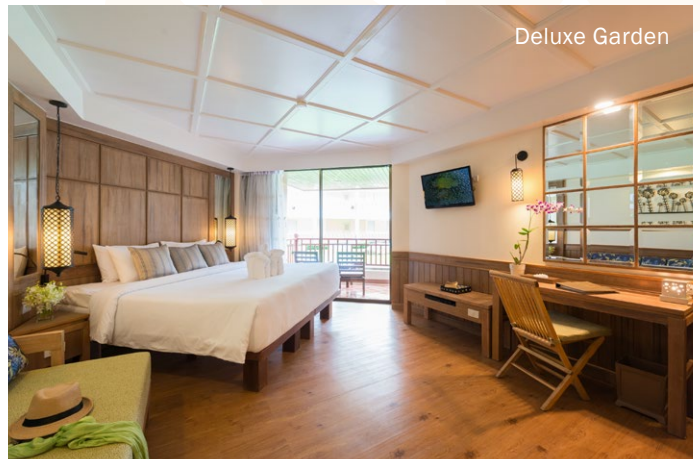
Perfect choice for a family of four. A sliding door to separate the adult bedroom from the kids' bedroom. The adult area is located next to an extra large balcony for guests to enjoy a lush garden view. The kids' bedroom is well appointed with two trundle beds for comfort. The bathroom is equipped with a bathtub and separate shower. This room is ideal for families due to its close proximity to the Joy Zone, games room and water slide to add the fun to your special family getaway!

Pool Access *New!*

Dive right into the pool with easy direct access from your private terrace, with the accommodation situated in the tropical oasis that is Bhuri Wing. This room offers a sleek modern feel with comfortable loungers and a spacious sofa bed providing you with space and comfort to enjoy.

In-room Amenities

- Private Balcony • Tea & Coffee Kettle • LCD TV
- Multi Satellite Channels • Safety Deposit Box
- IDD Telephone • Air Conditioning • Bathrobe • Slippers
- Hair Dryer • Umbrella • Katathani Essential Oil & Burner



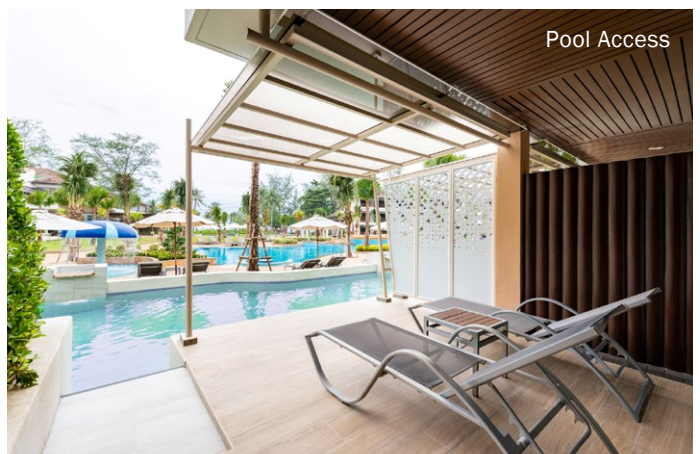
Deluxe Garden



Grand Deluxe



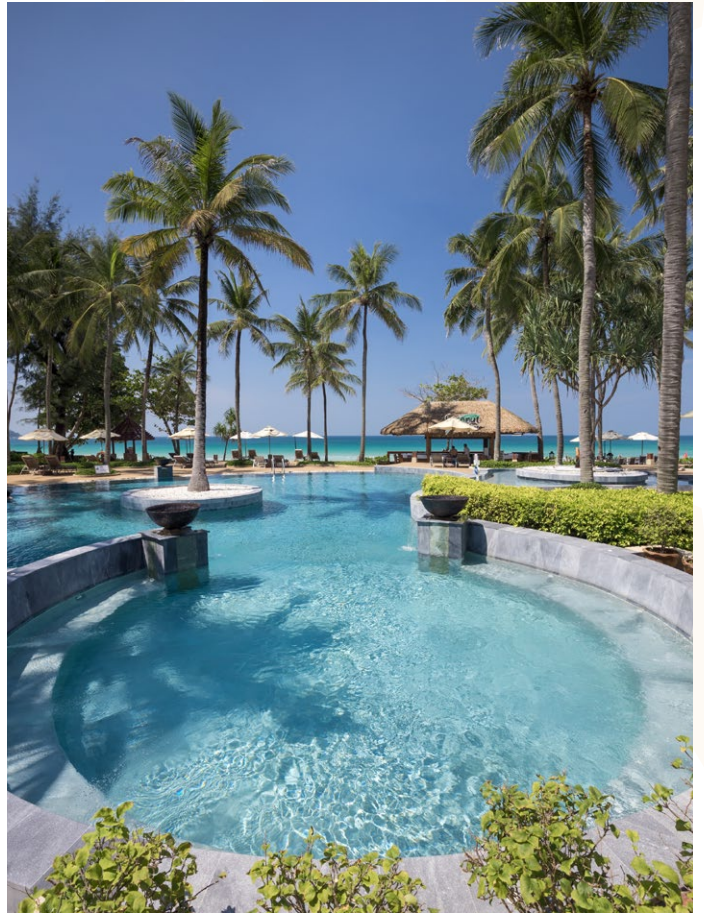
Deluxe Pool View



Pool Access



KATATHANI
PHUKET BEACH RESORT



FACILITIES & SERVICES

Pools

Take a dip in our 6 Swimming pools, 4 Kiddy Pools, 3 Jacuzzis, 2 Bubbling Water Springs, Mini Water Slide, Toddler Pool, Kid's Aqua Play.

Sports

A complete activity center for people of all ages.
2 Floodlit Tennis Court, 2 Fitness Centers and Saunas, Table Tennis, Petanque, Putting Green, Boxing Room.

Recreation

Dive Shop, Billiards, Game Room, Yoga, Cooking Class, Fruit Carving Class, Aqua Aerobics, Joy Zone.

Services

24 hours Room Service, Currency Exchange, Tour Desk, Airport Transfer, Laundry Service, Shuttle Service, Complimentary WiFi.

Shops Melon Minimart, Souvenir Shop and Night Market

Kids Kid's Club, Outdoor Playground, Babysitting Service.

Spa Situated next to the sea, our spa features 9 treatment rooms, and private facilities.





KATATHANI
PHUKET BEACH RESORT



RESTAURANTS & BARS

Chom Talay

For a choice of Thai or Western delights at breakfast and dinner.

Fisherman's Wharf

Savor the freshest grilled seafood right in front of the beach. This Phuket seafood restaurant is a favorite spot for light lunches and a sunset drink.

La Scala

Authentic Italian cuisine served in elegant European style.

Chanadda Royal Thai Cuisine

Relax to the gentle tones of Thai music while you dine the subtly spiced dishes of Thailand's aristocratic heritage.

Seaside

Serving freshly baked pizza and a la minute cooked pasta.

Seacret

Enjoy the popular Thai and International restaurant favorites for lunch in Phuket. just steps away from the ocean and pool.

Bars

Coconut bar, mango bar, pineapple bar, beach club bar and lobby lounge. Enjoy a cool refreshing drink or snack without even moving from the sun bed.



WEDDING

Perfect beachfront facilities for wedding ceremony. Cocktail and dinner reception with tailor-made service.

MEETINGS

4 Meeting Rooms, Outdoor Function Venue.

CONTACT US

Katathani Phuket Beach Resort

14 Kata Noi Road, Karon, Muang, Phuket 83100

Tel : +66 (0) 76318 350 to 99 or
+66 (0) 7633 0124 to 6

Email : reservation@katathani.com

Website : www.Katathani.com

