

FACT SHEET

Location

DEWA PHUKET Resort is located a few steps from the stunning and tranquil Nai Yang beach, which is part of protected Sirinath National Park, on the northwest coast of Phuket island. At just an 8-minute drive away from Phuket International Airport, the resort allows guests the accessibility of a quick arrival and departure into Phuket, without the fuss of yet another long journey. It's a boon for guests arriving in the middle of the night

Concept

Integrating a resort and holiday apartments, DEWA PHUKET Resort features 28 Pool Villas, 56 new deluxe rooms, and 46 One- and Two-Bedroom Apartments, making it the ideal destination for leisure travellers to this famous "Pearl of the Andaman." With its well-known Thai hospitality and boutique style and design, Dewa Phuket Resort ensures all guests will have a wonderful holiday experience and a true Thai beach getaway.

Deluxe Room



Total: 56 Size: 38 sqm

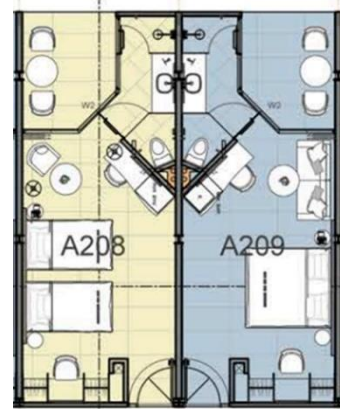
Our lovely Deluxe rooms have been completed December 2017. They are 38 square meters in size and all feature modern design. Each room has a balcony, while the ground-floor rooms have a terrace. All 56 Deluxe rooms are equipped to the international standard, with king size or twin beds, shower, open-plan wardrobe, sitting area, bathrobes, slippers, tea and coffee making facilities, beach bag with beach towels and umbrellas, and, of course, complimentary Wi-Fi.

Baby cots are provided complimentary and need to be booked in advance (might be subject to availability), while extra beds are available at extra cost and also need to be booked in advance.

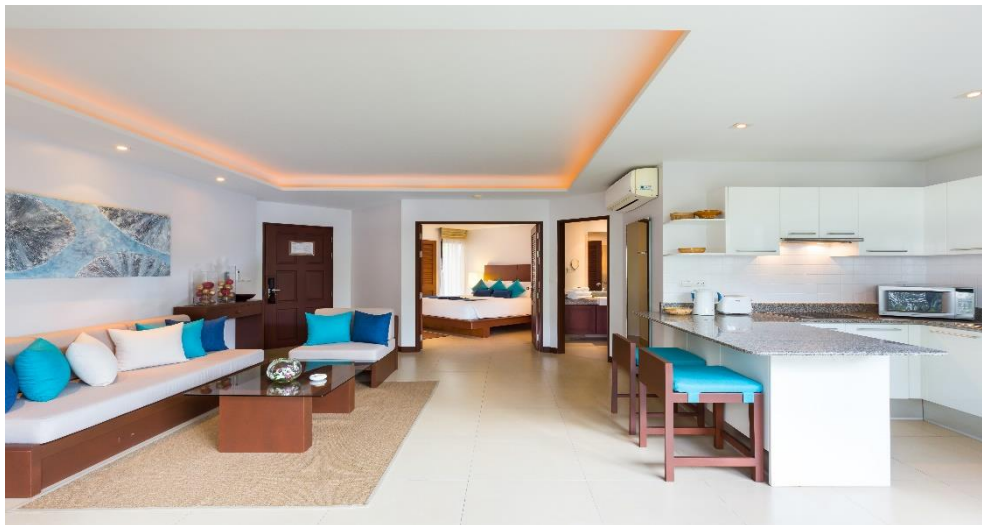


In Room Facilities

- Flat Screen Satellite TV
- Balcony or terrace
- Safe Box
- Coffee and tea making facilities
- Closet
- Bathroom
- Toiletries
- Bathrobes & Slippers
- Wireless Internet Access
- Air-conditioning
- IDD Telephone
- Hair dryer
- Mini Bar



Dewa Suites (One-Bedroom Suites)



Total: 25 Size: 67 sqm

The One Bedroom Suite is a one-bedroom apartment designed for comfort with 67 sqm of living space. The balcony is suitable for 4 people dining. The bedroom is fitted with King size bed, has a built-in wardrobe with safe deposit box and a plasma TV. The open kitchen concept with a counter bar works well for quick meals. All Suites come complete with full kitchen facilities. Each suite can accommodate additional adult or 2 additional children with the use of the sofa beds or roll-away beds



In Room Facilities

- King size bed
- Sofa seating area
- Flat Screen Satellite TV
- DVD/CD Player
- Safe Box
- Coffee and tea making facilities
- Closet
- Bathroom
- Toiletries
- Bathrobes & Slippers
- Wireless Internet Access
- Air-conditioning
- IDD Telephone
- Hair dryer
- Kitchen facilities



Pool Villas



Total: 28 Size: 70 For Pool Villa, 100 sqm Grand Pool Villa

Delivering the ultimate in style and sophistication, our 28 villas with private pool are perfect for a romantic retreat or family getaway. Blending contemporary comfort with traditional touches and authentic Thai artworks, these indulgent villas offer a huge living space. Relax in tropical luxury, plunge into your private outdoor pool and reconnect with your loved ones. Each villa boasts a romantic outdoor bathtub with special bath salt, and an outdoor rain shower.

The resort features 13 Pool Villas and 15 Grand Pool Villas, and while the interior decor and the pool size are the same, Grand Pool Villas have bigger garden and are equipped with outdoor sunbeds for your ultimate comfort.

A newly added feature to all of our pool villas are mobile phones that offer unlimited 4G, local and international calls – all complimentary for the guests to use during stay. The phones also serve as Wi-Fi hotspots for your own devices.



In Room Facilities

- King size 4 poster bed
- Sofa and seating area
- Terrace and an outdoor garden
- Ceiling fan
- Flat Screen Satellite TV
- DVD/CD Player
- Safety Box
- Coffee and tea making facilities
- In-room minibar
- Aromatherapy burner
- Closet
- Bathroom
- Luxury toiletries
- Bathrobes & Slippers
- Wireless Internet Access
- Air-conditioning
- IDD Telephone
- Hair dryer
- Mobile phone with unlimited local and international calls and 4G



Family Suites (Two-Bedroom Suites)



Total: 16 Size: 110 – 145 sqm

The Two Bedroom Suite is a two-bedroom apartment, great for families or group of friends looking for holiday home environment. Suites are 110–145 sqm in size with a King-size bed in the master bedroom and the second bedroom containing either two single beds or a queen-size bed. Additional persons can be accommodated in the living area with the use of the sofa beds or roll-away beds. In addition to indoor dining, you also could enjoy your meals on the private balcony.



In Room Facilities

- King size bed with en-suite bathtub in Master bedroom
- Twin beds or Queen-sized bed in 2nd bedroom
- 2nd bathroom with shower stall
- Sofa seating area
- Flat Screen Satellite TV
- DVD/CD Player
- Safe Box
- Coffee and tea making facilities
- Closet
- Bathroom
- Toiletries
- Bathrobes & Slippers
- Wireless Internet Access
- Air-conditioning
- IDD Telephone
- Hair dryer
- Kitchen facilities
- In-room

UNIT # 2

A living room	64.7 m ²
B1 bedroom	20.7 m ²
C1 bathroom	12.7 m ²
B2 bedroom	14.8 m ²
C2 bathroom	6.5 m ²
D terrace	23.3 m ²



two bedroom superior residence plan (119.4 m²)

UNIT # 5

A living room	49.1 m ²
B1 bedroom	15 m ²
C1 bathroom	9.3 m ²
B2 bedroom	16.6 m ²
C2 bathroom	11.7 m ²
D terrace	33.6 m ²



two bedroom premium residence plan (101.7 m²)

UNIT # 8

A living room	55.4 m ²
B1 bedroom	16.2 m ²
C1 bathroom	9.4 m ²
B2 bedroom	13.3 m ²
C2 bathroom	8.9 m ²
D terrace	9.6 m ²



two bedroom residence plan (103.2 m²)

Dining

- The Terrace Grill restaurant, Discover the freshest seafood close to the shores of Phuket's Andaman coast. Terrace Grill is a contemporary, upbeat seafood restaurant and grill that specializes in serving locally-sourced produce in a lively market-style atmosphere. Sample fresh fish and succulent shellfish, straight from the Andaman Sea, plus prime cuts of meat grilled to perfection. Unwind with your loved ones and discover the taste of the ocean in a light and laid-back setting. *(open daily from 06.30am – 10.30pm)*
- The Pool Bar a stylish, sophisticated sanctuary, The Pool Bar is the perfect place to relax and soak up the laid-back tropical ambience. The outdoor lounge offers chilled-out daytime indulgence, with cocktails, champagne and cabanas. The Pool Bar is also an exquisite indoor-outdoor destination for weddings, private parties and corporate functions with a twist.
- Bread & Butter Bakery. Sip, taste, discover. The Bread & Butter is a destination for families and couples to come together enjoy exquisite food and wine in a refined yet relaxed ambience. This sophisticated wine bar concept allows guests to discover the finest charcuterie meats and sharing platters, accompanied by the perfect glass or bottle from our extensive wine list. This makes the Bread & Butter the perfect spot for a cozy gathering with friends and family. Indoor and al fresco seating is available *(Open daily from 08.00am – 08.30pm)*
- Private Romantic Dining on the beach is available on request to impress a love one.
- In villa dining and in-residence dining is available from 7am to 10.30pm daily
- Grocery delivery service is available for our guests staying in the suites with kitchenettes. Orders can be made prior to arrival or during your stay with us. Please contact us if you would like to make an order

Spa

Unwind in our Lime Leaf Spa. This sublime wellness centre provides a broad array of treatments to soothe the body and elevate the senses. Guests can unwind in our peaceful treatment rooms, while a steam room and Jacuzzi provide the perfect options to soothe aching muscles. A selection of traditional Thai and modern massages will leave guests feeling revitalized, while our organic scrubs and wraps deliver pure bodily bliss.

Resort Swimming Pools

A large free-form pool located next to the main lobby of the resort just steps away from the Pool Bar offers an ideal relaxing dip in the hot afternoon sun, while the Residence pool features a 36 sqm Jacuzzi area alongside a 25m lap pool for the serious swimmers, as well as a separate toddler pool. Open 7 am to 7 pm/

Family Terrace

Relax and unwind with our collection of books and magazines, surf the web or connect with each other with a selection of board games.

Fitness Room

We are committed to ensure that your well-being is taken care of during your stay in Phuket, and this resort in Phuket offers two fitness rooms kitted out with cardio machines and weights to help you stay trim and fit! Also you can enjoy the large flat screen TV that is located inside the gym



Kids' Room

Rest assured that your young ones will be entertained and stimulated whilst staying with us. We have a dedicated area for children's entertainment and our recreation team is always on hand with plenty of fun activities including face painting, cookery classes, batik painting and much more!

Guest Services

Our guest services desk is manned 24 hours a day, with our Resort Hosts on call to assist and suggest the local Thai activities and experiences, or anything you may require, from consultations and reservations for excursions, to dining, baby-sitting, car rental or any other services you may need.