



INTERCONTINENTAL®
PHUKET RESORT



MEETINGS & EVENTS

MEETINGS & EVENTS

MEETINGS & EVENTS

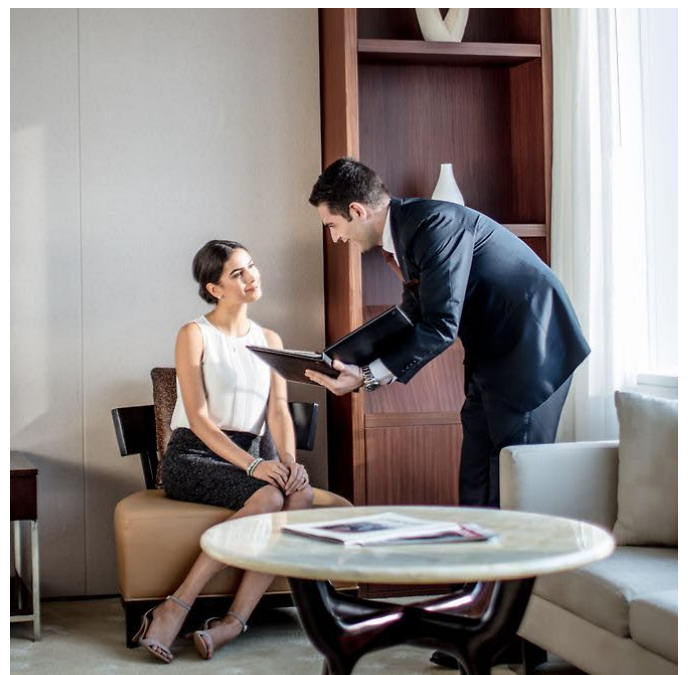
Nestled amidst the forested hills of Kamala Bay with panoramic views of the Andaman Sea, InterContinental® Phuket Resort is the premier meeting venue on the island where the latest in technology and excellence in service flow seamlessly in stunning design. From intimate to extravagant, business formal to beachside casual, we will facilitate your perfect event, whatever the occasion.



PERSONALISED SERVICES

Our dedicated team is on hand to take care of all the logistics and enhance your meeting or event with custom designed coffee breaks, lunches, dinners and special banquets – as well as enriching activities and cultural immersions.

To ensure delegates make the most of this incredible location, we will arrange a variety of authentic experiences to make their stay truly memorable.



INSIDER COLLECTION

We have created our Insider Collection of services to enrich your event with meaningful experiences that take you beyond the boardroom. From unique locations to inspiring speakers and fascinating team-building interactions that benefit local communities, we promise that every meeting is met with seamless service and new outlooks that will expand your conversations.

INSIDER LOCATIONS

It is our pleasure to ensure every guest is given the opportunity to experience a once-in-a-lifetime trip to Phuket. Our Concierge is here to help you experience Phuket from a local's perspective.

INSIDER INTERACTIONS

Team-building experiences help delegates connect with each other and with the unique character, heritage and geography of Kamala Bay. Each experience, whether based on or offsite, offers an original way to engage delegates and motivate them to build effective working relationships.

INSIDER COMMUNITY

Immersing in a community is the most intimate way to understand and appreciate a destination. InterContinental® Phuket Resort has established local relationships that enable us to recommend projects that engage delegates beyond the obligation of community service and inspire memorable bonds while benefiting the local community.

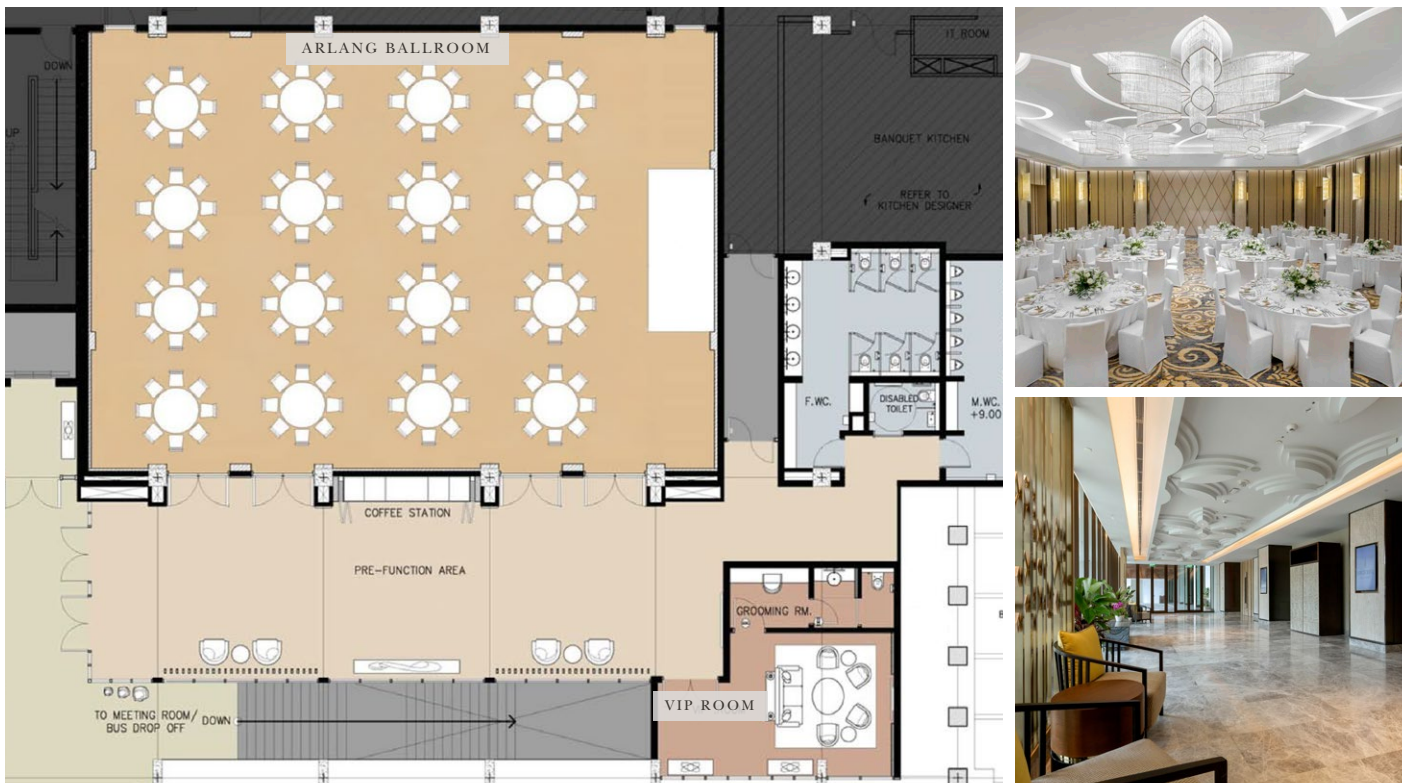


MEETING ROOMS

FLOOR PLAN 1 (API, AVA, ARUN, VIP ROOM)



FLOOR PLAN 2 (PRE FUNCTION, VIP ROOM, ARLANG BALLROOM)











MEETING ROOM & EVENT VENUES CAPACITY

EVENT VENUES

Looking for a venue for your next party or event, don't look any further... Introducing our exclusive beachfront venue 333 At The Beach on beautiful Kamala Beach. Looking for something else? Why not consider our stunning Rooftop Infinity Pool, private Event Lawn, elegant Grand Ballroom or even any of our Outlets which accommodate groups ranging from 10 to 200 guests.



MEETING ROOM & EVENT VENUES CAPACITY

Meeting Room	 Theatre Style	 Banquet Style	 U-Shape	 Boardroom	 Classroom Style	 Cocktail Reception	 Size (Sqm)	 Height (m)
Api	30	24	21	18	24	20	42	5 x 8.5 x 3.5
Ava	50	64	30	24	30	40	95	9.5 x 10 x 3.5
Arun	-	-	-	20	-	-	44	5.5 x 8 x 3.5
VIP room	-	-	6	-	-	10	27	5 x 5.5 x 3.5
Pre Function	-	-	-	-	-	130	120	6 x 20 x 3.5
Arlang Ballroom	220	160	75	60	160	220	304	14.5 x 21 x 4.2

Events Venue

*Beach Lawn	40	80	40	40	-	100	590	33 x 18
Beach Pavillion	20	40	-	20	-	40	55	11 x 5
333 At The Beach	-	150	-	-	-	150	660	27.5 x 21.9
Birdcage	12	20	-	-	-	20	77	7.1x10.8
Event Lawn	60	60	-	-	-	80	138	17.5x7.9
Event Garden	60	60	-	-	-	80	149	24x6.2
Infinity Pool (Lower area)	40	60	30	30	-	70	135	19x7.1
Infinity Pool (Upper area)	30	40	20	20	-	50	225	15 x 15

*Venue On Request only, Minimum Revenue Applies

HOTEL & FACILITIES

THE RESORT

InterContinental® Phuket Resort is an elegant beachside hideaway featuring elegantly appointed rooms, suites and villas, a haven that encapsulates all you desire for the perfect vacation in the sun. Lavish accommodation sits amidst manicured tropical gardens with a private lagoon.

Spectacular views of the Andaman Sea and lush mountain vistas provide a stunning backdrop to the resort's every distinct feature. Direct beach access, world-class dining, and extravagant wellness journeys are only a few of the delights that await.



GUEST ROOMS AND SUITES

In an elegant blend of rich and earthy tones, InterContinental® Phuket Resort's collection of 221 rooms, suites and villas feature Ocean, Pool, Mountain or Garden views. Each room, suite and villa is a meticulously designed escape, a fusion between traditional Thai art and contemporary design inspired by the resort's natural surrounding.

DINING EXPERIENCES

Rooted in locavorism, seasonality and curiosity, each dish at hom is an homage to fermentation. Tantalise your taste buds with the flavours and textures of traditional Thai recipes reimaged at Michelin Guide listed Jaras. Savour delectable light bites and craft cocktails served in a breathtaking seaside setting at Pine. Drawing inspiration from Old Town Phuket's vibrant shop house history, Pinto restaurant is our marketplace inspired dining venue. Tengoku offers Japanese cuisine inspired by the cooking masters of Osaka, brought to you with a contemporary twist. Golden sands and azure vistas edge a stand-alone beachfront grill, a laid-back lounge and an amazing events venue 333 at the Beach. Indulge in our quintessentially authentic high tea and take a break from the afternoon sun at Deavas' Lounge.





InterContinental® Phuket Resort
333 Moo 3, Kamala, Kathu,
Phuket 83150 Thailand

E: icphuket.sales@ihg.com
T: +66 (0) 76 629 999

W: phuket.intercontinental.com